

COOK PORTABLE WAREHOUSES

100 DOUGLAS ST., VALDOSTA, GA 31601
 132 CENTRAL INDUSTRIAL ROW, PURVIS, MS 39475
 1398 HWY 95 NORTH, BASTROP, TX 78602

LOFTED BARN SHED STATE OF ALABAMA, GEORGIA, SOUTH CAROLINA, FLORIDA

Design Criteria	
BUILDING CODE	2018 INTERNATIONAL BUILDING CODE WITH STATE AMENDMENTS, ASCE 7-16, FBC 2020 (7th ed.)
ELECTRICAL CODE	2014 NEC, NFPA70
BUILDING TYPE	RESIDENTIAL LAWN STORAGE SHED
MANUFACTURER	COOK PORTABLE WAREHOUSES
AGENCY	PSI
AGENCY PLAN NUMBER	LOFTED BARN 2018 IBC
CONSTRUCTION TYPE	V-B
FIRE PROTECTION	B
FIRE SUPPRESSION SYSTEM	NO
OCCUPANCY	U - UTILITY
NUMBER OF OCCUPANTS	0
ALLOWABLE # OF STORIES	1
WIND INFORMATION	160 MPH ULTIMATE; EXPOSURE C, CATEGORY I; ENCLOSED; +/- 0.18 INTERNAL PRESSURE COEFFICIENT; 15' HEIGHT
FLOOR LIVE LOAD	40.0 PSF
FLOOR DEAD LOAD	4.0 PSF
ROOF LIVE LOAD	20.0 PSF
ROOF DEAD LOAD	7.0 PSF
WALL DEAD LOAD	3.0 PSF
UNINHABITED LOFT LIVE LOAD	10.0 PSF
GROUND SNOW LOAD	0.0 PSF
FIRE RATING OF EXTERIOR WALLS	0
"R" RATING OF FLOOR, WALL, AND ROOF	R-0, R-0, R-0
MODULES PER BUILDING	1
SQUARE FOOTAGE	LESS THAN 719 SQ. FT.
EXEMPT FROM ENERGY CONSERVATION CODE?	YES
APPROVED FOR HURRICANE PROTECTION USAGE?	NO
DESIGNED FOR HURRICANE PUBLIC SHELTER?	NO

SITE INSTALLED ITEMS:

NOTE THAT THIS LIST DOES NOT NECESSARILY LIMIT THE ITEMS OF WORK AND MATERIALS THAT MAY BE REQUIRED FOR A COMPLETE INSTALLATION. ALL SITE RELATED ITEMS ARE SUBJECT TO LOCAL JURISDICTION APPROVAL.

1. THE COMPLETE FOUNDATION SUPPORTING AND TIE-DOWN SYSTEM.
2. RAMPS, STAIRS, AND GENERAL ACCESS TO THE BUILDING IF NECESSARY.
3. GUTTERS AND DOWN SPOUTS ON ALL BUILDINGS WITH EAVES OF LESS THAN 6 INCHES HORIZONTAL PROJECTION EXCEPT FOR GABLE END RAKES.

OCCUPANCY NOTE:

THIS BUILDING IS NOT DESIGNED FOR HUMAN HABITATION AND DOES NOT HAVE RUNNING WATER OR SANITATION SERVICES. THIS BUILDING IS DESIGNED AS A UTILITY SHED TO STORE LAWN EQUIPMENT SUCH AS WHEEL BARROWS, GARDENING SUPPLIES, FLOWER POTS, AND CARDBOARD BOXES WITH VARIOUS SMALL ITEMS.

Sheet Index	
SHEET NUMBER	SHEET TITLE
S-1	COVER SHEET
S-2	GENERAL NOTES
S-3	WIND LOAD TABLES
S-4	FASTENING SCHEDULE
S-5	FRAMING PLANS
S-6	ELEVATION PANEL SIDING
S-6A	ELEVATION LAP SIDING
S-7	7'-11 1/2" SHED - FRAMING ELEVATION
S-8	9'-11 1/2" SHED - FRAMING ELEVATION
S-9	11'-0" SHED - FRAMING ELEVATION
S-10	SIDE WALL ELEVATION
S-11	CROSS SECTIONS
S-12	DETAILS
S-13	DETAILS
S-14	DETAILS
S-15	FRAMING & FLOOR PLAN FOR STRAIGHT PORCH
S-16	ELEVATIONS FOR STRAIGHT PORCH
S-17	FRAMING & FLOOR PLAN FOR CLIPPED PORCH
S-18	ELEVATIONS FOR CLIPPED PORCH
S-19	DETAILS
S-20	DETAILS



04/04/22

1552 6TH ST., WINTER HAVEN, FL 33880
 (863)865-6502

COVER SHEET

DATE: 12/08/20 DRAWN BY: RD
 SCALE: AS NOTED CHECKED BY: KMB

SHEET:

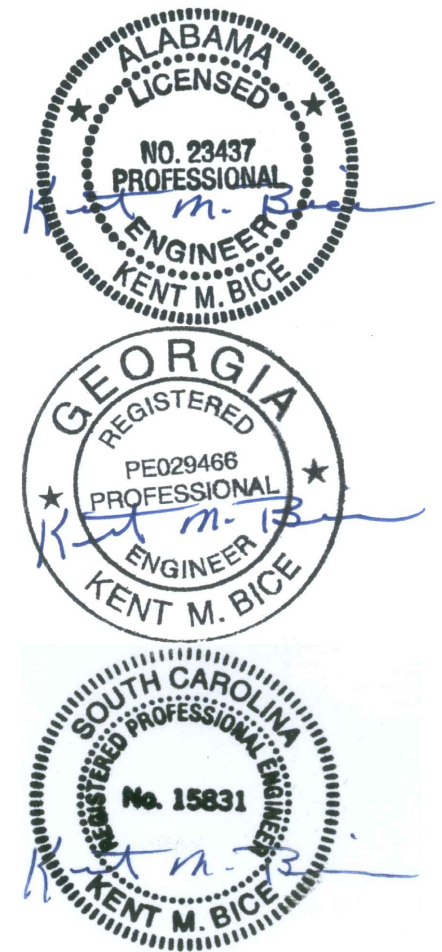
S-1

SHEET 1 OF 21

THESE PLANS WERE DESIGNED IN ACCORDANCE WITH THE 2018 INTERNATIONAL BUILDING CODE WITH STATE AMENDMENTS, FBC 2020 (7TH ED.).

GENERAL NOTES:

1. THIS STRUCTURE WAS DESIGNED IN ACCORDANCE WITH THE 2018 INTERNATIONAL BUILDING CODE WITH STATE AMENDMENTS, FBC 2020 (7TH ED.), (2018 IBC).
2. ALL MATERIALS AND LABOR SHALL BE IN ACCORDANCE WITH THE ABOVE CODE AND ALL OTHER APPLICABLE LOCAL CODES AT THE TIME OF MANUFACTURE.
3. WRITTEN DIMENSIONS SHALL TAKE PRECEDENCE OVER SCALED DIMENSIONS.
4. THE FOUNDATION PLAN IS A SEPARATE SET OF PLANS FOR APPROVAL BY LOCAL MUNICIPALITIES.
5. EXTERIOR DIMENSIONS CAN VARY BETWEEN LIMITS SHOWN AT 2' O.C. BUT MEMBER SPACING SHALL NOT EXCEED LIMITS AS INDICATED.
6. ALL THE FOLLOWING LUMBER SHALL BE PRESSURE TREATED IN ACCORDANCE WITH AWPA USE CATEGORY UC4B (GROUND CONTACT, HEAVY DUTY)-SKIDS.
7. ALL THE FOLLOWING LUMBER SHALL BE PRESSURE TREATED IN ACCORDANCE WITH AWPA USE CATEGORY UC3B (EXTERIOR ABOVE GROUND, UNCOATED OR POOR WATER RUNOFF)-FLOOR JOISTS, PLYWOOD FLOOR DECKING, AND EXTERIOR RATED WOOD STRUCTURAL PANEL SIDING.
8. ALL FASTENERS AND CONNECTORS IN CONTACT WITH PRESSURE TREATED WOOD SHALL BE HOT DIPPED GALVANIZED (G185) OR STAINLESS STEEL.
9. ALL WINDOWS WITHIN 24" OF DOORS, AND ALL GLASS IN DOORS SHALL BE SAFETY, TEMPERED, OR ACRYLIC PLASTIC SHEET.
10. FOR ROOFS WITH ASPHALT SHINGLES AND A SLOPE BETWEEN 2 TO 12 AND 4 TO 12 SHALL HAVE A DOUBLE UNDERLAYMENT APPLICATION AS REQUIRED IN ACCORDANCE WITH SECTION 1507.2.2 OF THE 2018 IBC OR PER SHINGLE MANUFACTURER INSTRUCTIONS.
11. UNDERLAYMENT SHALL CONFORM WITH SECTION 1507.2.3 OF THE 2018 IBC OR PER SHINGLE MANUFACTURER INSTRUCTIONS.
12. ASPHALT SHINGLES SHALL CONFORM WITH SECTION 1507.2.5 OF THE 2018 IBC ATTACHMENT OF ASPHALT SHINGLES SHALL CONFORM WITH 1507.2.7 OF THE 2018 IBC.
13. FASTENERS FOR ASPHALT SHINGLES SHALL CONFORM TO SECTION 1507.2.6 OF THE 2018 IBC.
14. TIE-DOWNS SHALL MEET THE REQUIREMENTS OF ALL APPLICABLE CODES.
15. THESE PLANS HAVE NOT BEEN DESIGNED FOR HVHZ REQUIREMENTS AS SET FORTH IN THE 2018 IBC OR FOR USE AS A COMMERCIAL BUILDING.
16. THE CONTRACTOR SHALL BE RESPONSIBLE FOR VERIFYING ALL EXISTING CONDITIONS.
17. THE CONTRACTOR SHALL BE RESPONSIBLE FOR DELIVERY AND PLACEMENT OF LAWN STORAGE UNIT TO ENSURE THE INTEGRITY OF THE BUILDING AND ITS COMPONENT PARTS.
18. NO FIELD REVISIONS TO ANY STRUCTURAL COMPONENTS OR DEVIATIONS FROM THESE DRAWINGS SHALL BE MADE.
19. THE OWNER AND THE CONTRACTOR SHALL HOLD HARMLESS THE ENGINEER FROM AND AGAINST ALL LIABILITY CLAIMS, DAMAGES, LOSSES AND EXPENSES INCLUDING LEGAL FEES ARISING OUT OF OR RESULTING FROM ERRORS OR OMISSIONS IN THE PERFORMANCE OF THE WORK BY THE CONTRACTOR.
20. SECTIONS AND DETAILS ON THE DRAWINGS ARE INTENDED TO BE TYPICAL AND SHALL APPLY AT ALL SIMILAR LOCATIONS, UNLESS OTHER SECTIONS AND DETAILS ARE SPECIFICALLY REFERENCED.
21. REFER TO SUPPLIED FASTENING SCHEDULE FOR FASTENING BASED ON CONNECTION AND LOCATION OF MEMBERS AS PER 2018 IBC TABLE 2304.10.1 UNLESS NOTED OTHERWISE.
22. BUILDINGS HAVE BEEN DESIGNED FOR LP SMARTSIDE STRAND SUBSTRATE PANEL SIDING, LP SMARTSIDE PRECISION LAP SIDING SHALL BE USED WITH X-STRAPS OR STRUCTURAL SHEATHING AS DETAILED IN THIS PLAN SET
23. FASTENERS IN LP SMARTSIDE STRAND SUBSTRATE PANEL SIDING MUST NOT BE INSTALLED IN PANEL SIDING GROOVES IN THE FIELD OF THE PANEL SIDING OR WHEN THE PANEL SIDING GROOVES OCCUR AT CUT EDGES OF THE PANEL SIDING.
24. REFER TO THE ICC-ES EVALUATION REPORT ESR-1301 / 3090 FOR ADDITIONAL DATA AND SPECIFICATIONS OF LP SMARTSIDE STRAND SUBSTRATE PANEL / LAP SIDING.
25. MAX OPENINGS WIDTHS MUST COMPLY WITH DESIGN RATIOS AS PER ANSI/AF&PA SDPWS-2015. BUILDINGS HAVE BEEN DESIGNED TO HAVE ONLY OPENINGS WITH MAX WIDTHS EQUAL TO THOSE IN THE ENDWALL SHEAR WALL CHART.
26. PER SECTION 1609.1.2 OF THE 2018 IBC, STORAGE SHEDS THAT ARE NOT DESIGNED FOR HUMAN HABITATION AND THAT HAVE A FLOOR AREA OF 720 SQUARE FEET OR LESS ARE NOT REQUIRED TO COMPLY WITH THE MANDATORY WIND-BORNE-DEBRIS-IMPACT STANDARDS OF THE 2018 IBC.
27. BUILDINGS HAVE BEEN DESIGNED TO HAVE ANCHORS DIRECTLY ATTACHED TO ALL FOUR CORNERS OF THE BUILDING TO RESIST TENSION FORCES FROM LATERAL WIND LOADS. THIS DESIGN CONSIDERATION MUST BE MADE BY INSTALLER WHEN ATTACHING ANCHORING SYSTEM TO BUILDING.
28. UNLESS NOTED OTHERWISE, ATTACH ALL MANUFACTURED PRODUCTS IN ACCORDANCE WITH MANUFACTURERS SPECIFICATIONS.
29. 2X4 SP #2 PRESSURE TREATED LUMBER SHALL BE SUBSTITUTED FOR 2X4 SPF #2 LUMBER IN WALLS FOR USE IN FLOOD PLAINS.
30. PER APA PRODUCT REPORT PR-N124, LP SMARTSIDE STRAND SUBSTRATE SERIES TREATED-ENGINEERED-WOOD PANEL AND LAP SIDING IS PERMITTED ON WALLS FOR USE IN FLOOD PLAINS.
31. 19/32" LP PROSTRUCT FLOORING WITH SMARTFINISH IS PERMITTED IN LIEU OF 5/8" APA RATED STRUCTURAL SHEATHING ON FLOOR. INSTALL PER MANUFACTURER INSTRUCTIONS.



04/04/22

1552 6TH ST., WINTER HAVEN, FL 33880
(863)865-6502

GENERAL NOTES

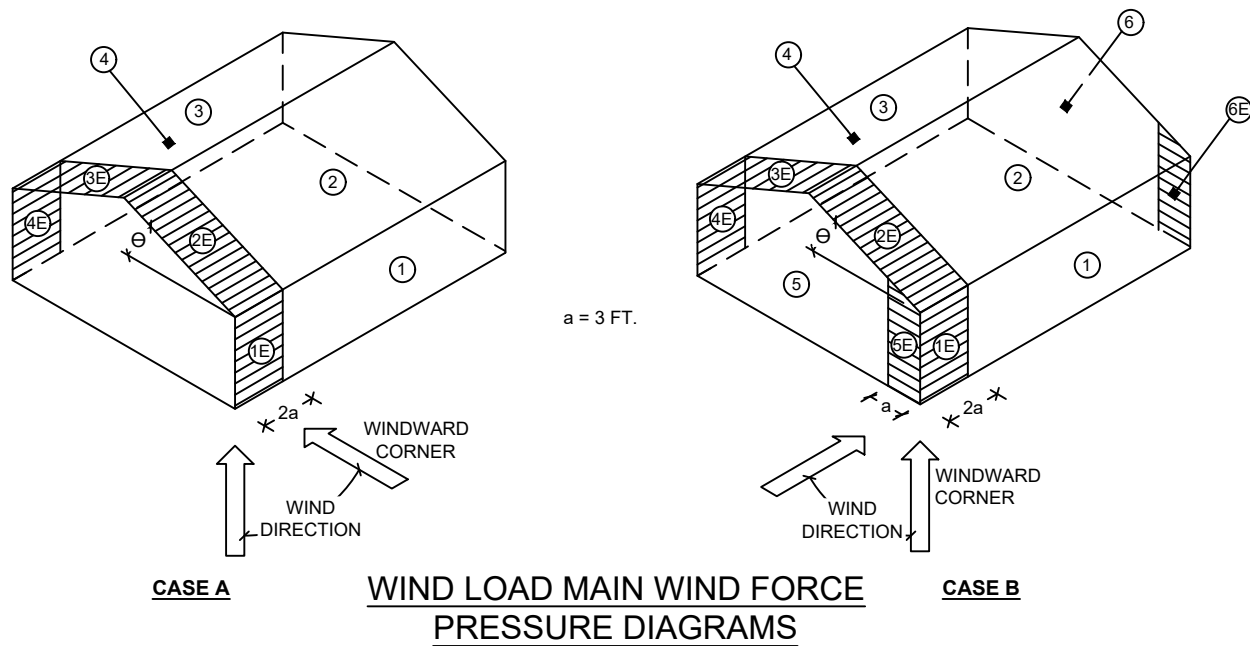
DATE: 12/08/20	DRAWN BY: RD
SCALE: AS NOTED	CHECKED BY: KMB

SHEET:

S-2

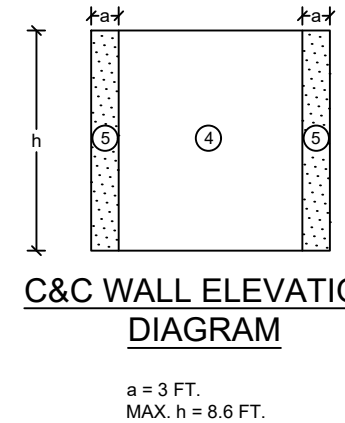
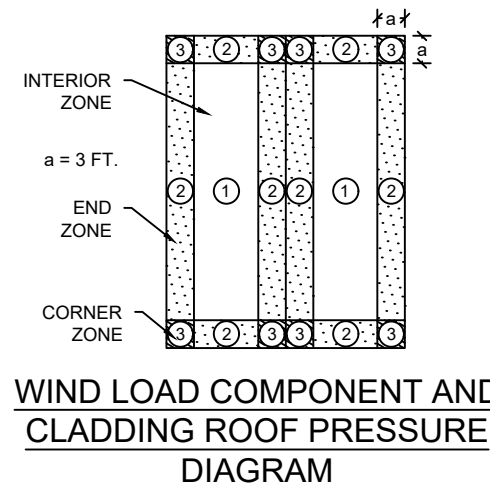
SHEET 2 OF 21

THESE PLANS WERE DESIGNED IN ACCORDANCE WITH THE 2018 INTERNATIONAL BUILDING CODE WITH STATE AMENDMENTS, FBC 2020 (7TH ED.).



BUILDING DATA ASCE 7-10 WIND

WIND VELOCITY V_{ULT}	160 MPH	INTERNAL PRESSURE COEFFICIENT	± 0.18
WIND VELOCITY V_{ASD}	124	(ENCLOSED BUILDING ASCE 7-10)	
BUILDING CATEGORY	I	HEIGHT & EXPOSURE ADJUSTMENT COEFFICIENT	1.21
ROOF ANGLE, ° (DEGREES)	60 DEGREES 38 DEGREES ON AVERAGE	ROOF DEAD LOAD RESISTING UPLIFT (PSF)	7.0
WIND EXPOSURE CATEGORY	C	MEAN ROOF HEIGHT	15



NOTES:

- FOR EFFECTIVE AREAS BETWEEN THOSE GIVEN ABOVE THE LOAD MAY BE INTERPOLATED, OTHERWISE USE THE LOAD ASSOCIATED WITH THE LOWER EFFECTIVE AREA.
- PLUS AND MINUS SIGNS SIGNIFY PRESSURES ACTING TOWARD AND AWAY FROM THE SURFACES, RESPECTIVELY.
- PRESSURES SHOWN ARE APPLIED NORMAL TO THE SURFACE.
- REFER TO PRESSURE ZONE DIAGRAMS PROVIDED FOR CORRESPONDING ZONES.
- ROOF COVERINGS, FINISHES, ETC SHALL BE DESIGNED FOR THE FULL NEGATIVE DESIGN PRESSURE.

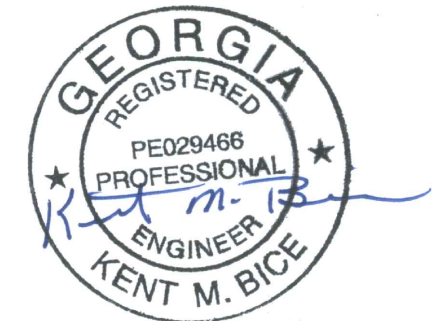
DESIGN WIND LOADS - WINDOWS, DOORS, COMPONENTS AND CLADDING

ROOF				WALLS			
ZONE	AREA (FT ²)	DESIGN PRESSURE (PSF)		ZONE	AREA (FT ²)	DESIGN PRESSURE (PSF)	
		POSITIVE	NEGATIVE			POSITIVE	NEGATIVE
1	10	50.9	-55.8	4	10	55.8	-60.5
1	20	49.6	-52.9	4	20	53.2	-58.0
1	50	47.7	-49.1	4	50	49.9	-54.6
1	100	46.2	-46.2	4	100	47.4	-52.2
2	10	50.9	-65.2	5	10	55.8	-74.7
2	20	49.6	-62.3	5	20	53.2	-69.6
2	50	47.7	-58.6	5	50	49.9	-62.9
2	100	46.2	-55.8	5	100	47.4	-58.0
3	10	50.9	-65.2				
3	20	49.6	-62.3				
3	50	47.7	-58.6				
3	100	46.2	-55.8				

DESIGN WIND LOADS - MWFRS

LOAD CASE A	WALL				ROOF			
	SURFACE 1	SURFACE 1E	SURFACE 4	SURFACE 4E	SURFACE 2	SURFACE 2E	SURFACE 3	SURFACE 3E
	35.0	41.2	-26.0	-31.3	24.0	27.9	-27.9	-32.8

LOAD CASE B	SIDE WALL				ROOF				GABLE WALL			
	WINDWARD		LEEWARD		WINDWARD		LEEWARD		WINDWARD		LEEWARD	
	SURFACE 1	SURFACE 1E	SURFACE 4	SURFACE 4E	SURFACE 2	SURFACE 2E	SURFACE 3	SURFACE 3E	SURFACE 5	SURFACE 5E	SURFACE 6	SURFACE 6E
	-29.8	-31.3	-29.8	-31.3	-41.2	-59.2	-26.0	-33.6	27.5	37.4	-22.3	-28.9



04/04/22

1552 6TH ST., WINTER HAVEN, FL 33880
(863)865-6502

WIND LOAD TABLES

DATE: 12/08/20 DRAWN BY: RD
SCALE: AS NOTED CHECKED BY: KMB

SHEET:

S-3

SHEET 3 OF 21

FASTENING SCHEDULE		
CONNECTION	FASTENING ^{a, k}	LOCATION
1. JOIST TO SILL OR GIRDER	3 - 8d COMMON (2½" X 0.131") 3 - 3" X 0.131" NAILS 3 - 3", 14 GAGE STAPLES	TOENAIL
2. BRIDGING TO JOIST	2 - 8d COMMON (2½" X 0.131") 2 - 3" X 0.131" NAILS 2 - 3", 14 GAGE STAPLES	TOENAIL EACH END
3. SOLE PLATE TO JOIST OR BLOCKING	16d (3½" X 0.135") AT 12" O.C. 3" X 0.131" NAILS AT 12" O.C. 3", 14 GAGE STAPLES AT 12" O.C.	FACE NAIL
4. SOLE PLATE TO JOIST OR BLOCKING AT BRACED WALL PANEL	3 - 16d (3½" X 0.135") AT 16" O.C. 4 - 3" X 0.131" NAILS AT 16" O.C. 4 - 3", 14 GAGE STAPLES AT 16" O.C.	FACE NAIL
5. TOP PLATE TO STUD	2 - 16d (3½" X 0.162") 3 - 3" X 0.131" NAILS 3 - 3", 14 GAGE STAPLES	END NAIL
6. STUD TO SOLE PLATE	4 - 8d COMMON (2½" X 0.131") 4 - 3" X 0.131" NAILS 4 - 3", 14 GAGE STAPLES	TOENAIL
	2 - 16d COMMON (3½" X 0.162") 3 - 3" X 0.131" NAILS 3 - 3", 14 GAGE STAPLES	END NAIL
7. DOUBLE STUDS	16d (3½" X 0.162") AT 24" O.C. 3" X 0.131" NAILS AT 16" O.C. 3", 14 GAGE STAPLES AT 16" O.C.	FACE NAIL
8. TOP PLATE TO TOP PLATE	16d (3½" X 0.162") AT 16" O.C. 3" X 0.131" NAILS AT 12" O.C. 3", 14 GAGE STAPLES AT 12" O.C.	FACE NAIL
	8 - 16d COMMON (3½" X 0.162") 12 - 3" X 0.131" NAILS 12 - 3", 14 GAGE STAPLES	FACE NAIL AT LAP SPLICE
9. BLOCKING BETWEEN JOISTS OR RAFTERS TO TOP PLATE	3 - 8d COMMON (2½" X 0.131") 3 - 3" X 0.131" NAILS 3 - 3", 14 GAGE STAPLES	TOENAIL
10. RIM JOIST TO TOP PLATE	8d (2½" X 0.131") AT 6" O.C. 3" X 0.131" NAILS AT 6" O.C. 3", 14 GAGE STAPLES AT 6" O.C.	TOENAIL
11. TOP PLATES, LAPS AND INTERSECTIONS	2 - 16d COMMON (3½" X 0.162") 3 - 3" X 0.131" NAILS 3 - 3", 14 GAGE STAPLES	FACE NAIL
12. CONTINUOUS HEADER (2) PIECES	16d COMMON (3½" X 0.162")	16" O.C. EACH EDGE, FACE NAIL
13. CEILING JOISTS TO PLATE	3 - 8d COMMON (2½" X 0.131") 3 - 3" X 0.131" NAILS 3 - 3", 14 GAGE STAPLES	TOENAIL
14. CONTINUOUS HEADER TO STUD	4 - 8d COMMON (2½" X 0.131")	TOENAIL
15. RAFTER TO PLATE	3 - 16d (3½" X 0.162") 4 - 3" X 0.131" NAILS 4 - 3", 14 GAGE STAPLES	TOENAIL
16. 1" DIAGONAL BRACE TO EACH STUD AND PLATE	2 - 8d COMMON (2½" X 0.131") 2 - 3" X 0.131" NAILS 3 - 3", 14 GAGE STAPLES	FACE NAIL
17. BUILT-UP CORNER STUDS	16d (3½" X 0.162") 3" X 0.131" NAILS 3" 14 GAGE STAPLES	12" O.C. FACE NAIL

FASTENING SCHEDULE		
CONNECTION	FASTENING ^{a, k}	LOCATION
18. BUILT-UP GIRDER AND BEAMS	20d COMMON (4" X 0.192") at 32" O.C. 3" X 0.131" NAIL AT 24" O.C. 3" 14 GAGE STAPLE AT 24" O.C. AND	FACE NAIL AT TOP AND BOTTOM STAGGERED ON OPPOSITE SIDES
	2 - 20d COMMON (4" X 0.192") OR 3 - 3" X 0.131" NAIL OR 3 - 3" 14 GAGE STAPLE	FACE NAIL AT ENDS AND AT EACH SPLICE
19. COLLAR TIE TO RAFTER	3 - 10d COMMON (3" X 0.148") 4 - 3" X 0.131" NAILS 4 - 3" 14 GAGE STAPLES	FACE NAIL
20. ROOF RAFTER TO 2-BY RIDGE BEAM	3 - 10d COMMON (3½" X 0.148") 4 - 3" X 0.131" NAILS 4 - 3" 14 GAGE STAPLES	TOENAIL
21. JOIST TO BAND JOIST	3 - 16d COMMON (3½" X 0.162") 4 - 3" X 0.131" NAILS 4 - 3" 14 GAGE STAPLES	END NAIL
22. WOOD STRUCTURAL PANELS AND PARTICLEBOARD ^p , SUBFLOOR, ROOF AND WALL SHEATHING (TO FRAMING)	½" AND LESS 6d ^{c, j} 2¾" X 0.113" NAIL ^l 1¾" X 16 GAGE ^m STAPLE 19/32" TO ¾"	6" O.C. AT EDGES AND 12" O.C. AT INTERMEDIATE, 4" O.C. AT COMPONENT AND CLADDING EDGE STRIP # ZONE 3 [REFER TO FIGURE ON SHEET S-3]
	SINGLE FLOOR, COMBINATION SUBFLOOR-UNDERLAYMENT TO FRAMING 7/8" TO 1" 8d ^c 1/8" TO 1/4" 10d ^d OR 8d ^e	
23. PANEL SIDING TO FRAMING	½" OR LESS 6d ^f 5/8" 8d ^f	6" / 12" O.C. AT EDGES / INTERMEDIATE
24. FIBERBOARD SHEATHING	1/2" NO. II GAGE ROOFING NAIL ^h 6d COMMON NAIL (2" x 0.113") NO. 16 GAGE STAPLE ⁱ	3" / 6" O.C. AT EDGES / INTERMEDIATE FOR STRUCTURAL APPLICATIONS 6" / 12" O.C. AT EDGES / INTERMEDIATE FOR NON-STRUCTURAL APPLICATIONS
	25/32" NO. II GAGE ROOFING NAIL ^h 8D COMMON NAIL (2 ½" x 0.131") NO 16 GAGE STAPLE ⁱ	

NOTES:

- a. COMMON OR BOX NAILS ARE PERMITTED TO BE USED EXCEPT WHERE OTHERWISE STATED.
- b. NAILS SPACED AT 6" O.C. AT EDGES, 12" AT INTERMEDIATE SUPPORTS EXCEPT 6" AT SUPPORTS WHERE SPANS ARE 48" OR MORE. NAILS FOR WALL SHEATHING ARE PERMITTED TO BE COMMON, BOX OR CASING.
- c. COMMON OR DEFORMED SHANK (6d - 2" x 0.113"; 8d - 2 ½" x 0.131"; 10d 3" x 0.148").
- d. COMMON (6d - 2" x 0.113"; 8d - 2 1/2" x 0.131"; 10d x 0.148").
- e. DEFORMED SHANK (6d - 2" x 0.113"; 8d - 2 1/2" x 0.131"; 10d 3" x 0.148").
- f. CORROSION-RESISTANT SIDING (6d - 1 7/8" x 0.106"; 8d 2 3/8" x 0.128") OR CASING (6d 2" x 0.099"; 8d 2 1/2" x 0.113") NAIL.
- g. FASTENERS SPACED 3" O.C. AT EXTERIOR EDGES AND 6" O.C. AT INTERMEDIATE SUPPORTS, WHEN USED AS STRUCTURAL SHEATHING. SPACING SHALL BE 6" O.C. ON THE EDGES AND 12" O.C. AT INTERMEDIATE SUPPORTS FOR NONSTRUCTURAL APPLICATIONS.
- h. CORROSION-RESISTANT ROOFING NAILS WITH 7/16" DIAMETER HEAD AND 1 ½" LENGTH FOR 1/2" SHEATHING AND 1 3/4" LENGTH FOR 25/32" SHEATHING.
- i. CORROSION-RESISTANT STAPLES WITH NOMINAL 7/16" CROWN OR 1" CROWN AND 1 1/4" LENGTH FOR 1/2" SHEATHING AND 1 1/2" LENGTH FOR 25/32" SHEATHING. PANEL SUPPORTS AT 16" (20" IF STRENGTH AXIS IS THE LONG DIRECTION OF THE PANEL, UNLESS OTHERWISE MARKED).
- j. FOR ROOF SHEATHING APPLICATIONS, 8d NAILS (2 1/2" x 0.113") ARE THE MINIMUM REQUIRED FOR WOOD STRUCTURAL PANELS.
- k. STAPLES SHALL HAVE A MINIMUM CROWN WIDTH OF 7/16".
- l. FOR ROOF SHEATHING APPLICATIONS, FASTENERS SPACED 4" O.C. AT EDGES, 8" O.C. AT INTERMEDIATE SUPPORTS.
- m. FASTENERS SPACED 4" O.C. AT EDGES, 8" O.C. AT INTERMEDIATE SUPPORTS FOR SUBFLOOR AND WALL SHEATHING AND 3" O.C. AT EDGES, 6" AT INTERMEDIATE SUPPORTS FOR ROOF SHEATHING.
- n. FASTENERS SPACED 4" O.C. AT EDGES, 8" AT INTERMEDIATE SUPPORTS.



04/04/22

1552 6TH ST., WINTER HAVEN, FL 33880
(863)865-6502

FASTENING SCHEDULE

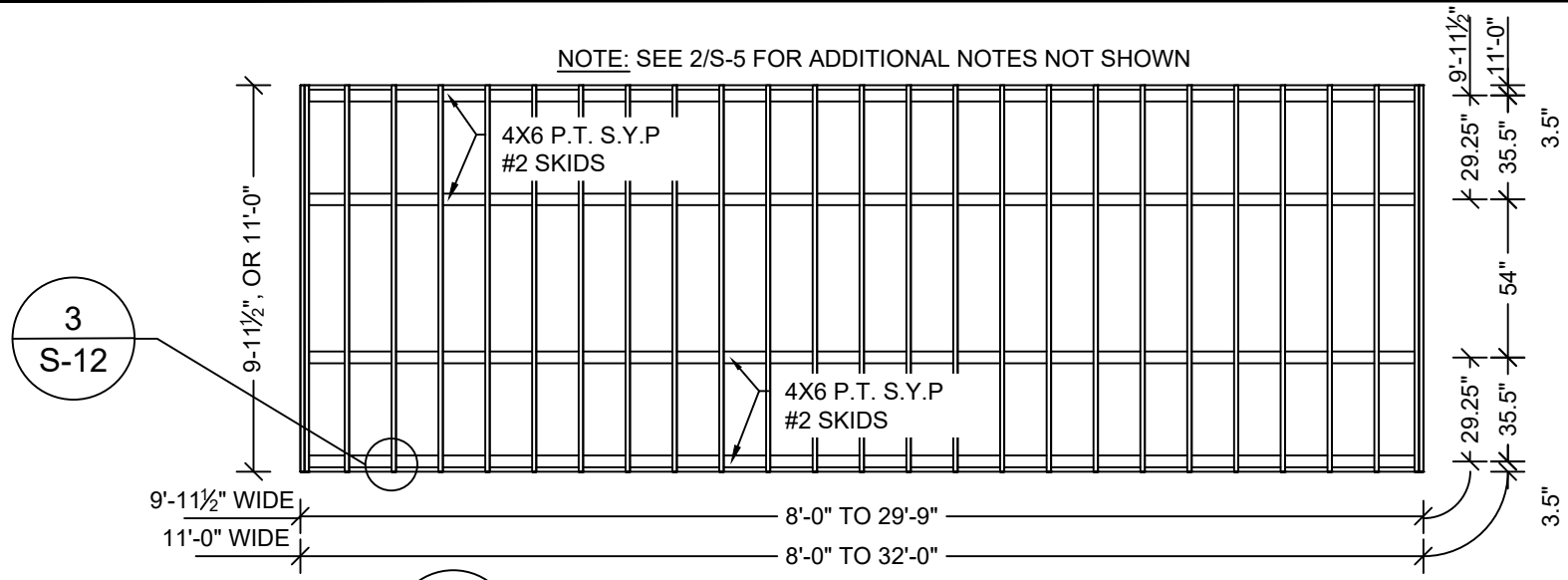
DATE: 12/08/20 DRAWN BY: RD
SCALE: AS NOTED CHECKED BY: KMB

SHEET:

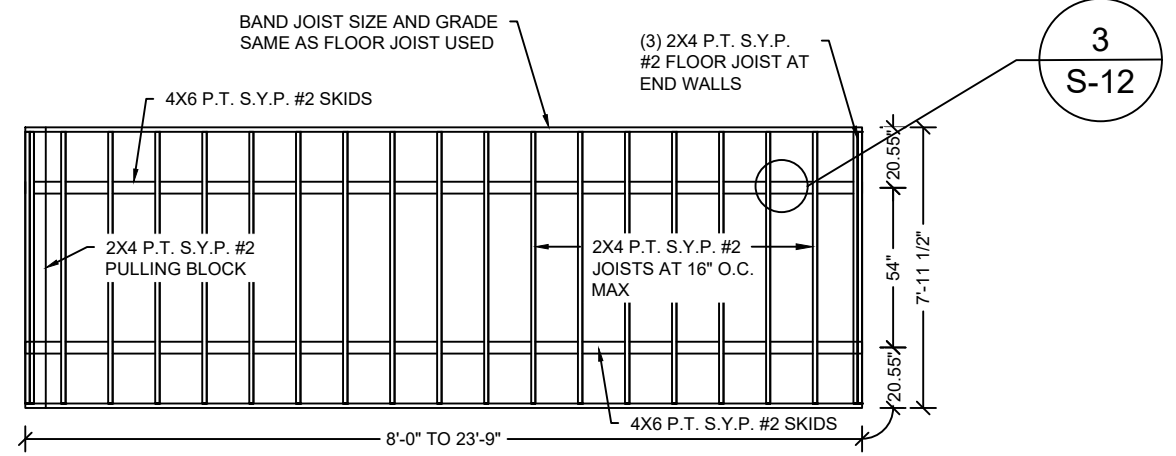
S-4

SHEET 4 OF 21

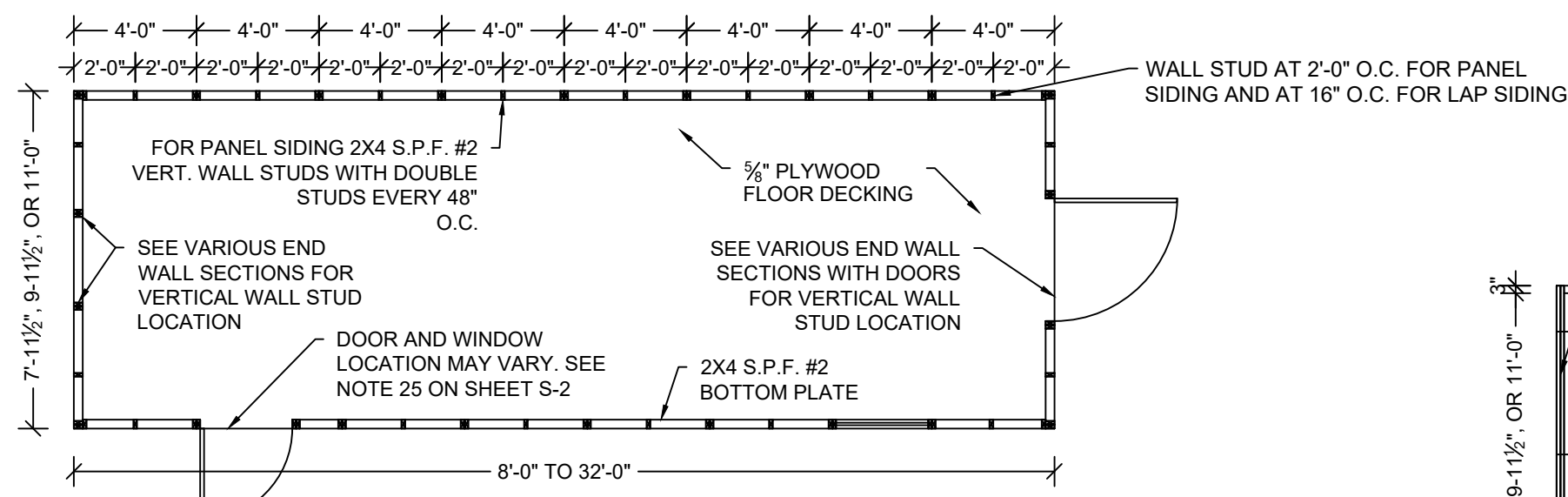
THESE PLANS WERE DESIGNED IN ACCORDANCE WITH THE 2018 INTERNATIONAL BUILDING CODE WITH STATE AMENDMENTS, FBC 2020 (7TH ED.).



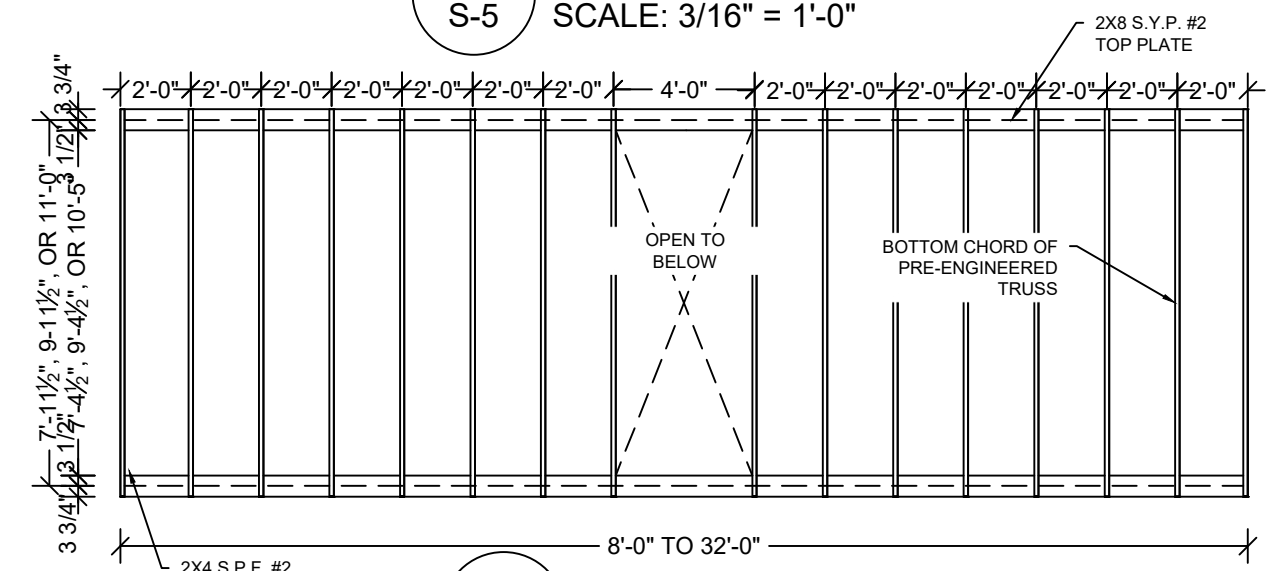
1 FLOOR FRAMING PLAN -9'-11 1/2" & 11'-0" UNITS
 S-5 SCALE: 3/16" = 1'-0"



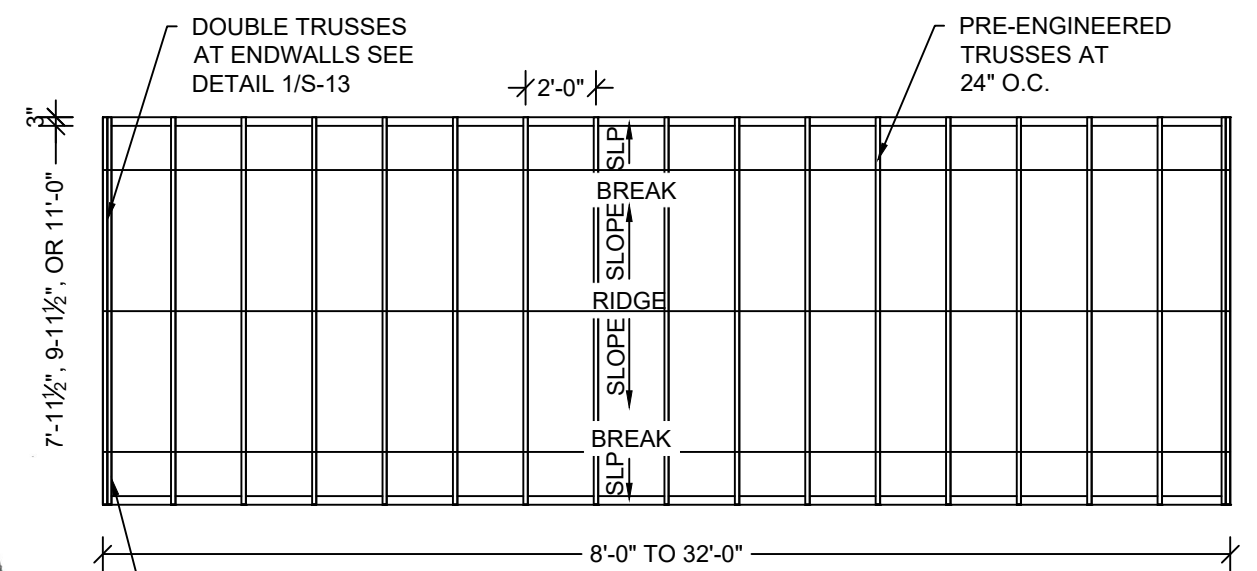
2 FLOOR FRAMING PLAN -7'-11 1/2" UNIT
 S-5 SCALE: 3/16" = 1'-0"



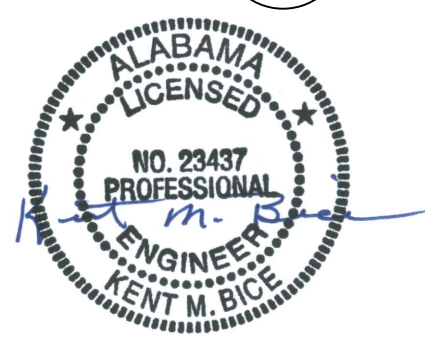
3 FLOOR DECK PLAN
 S-5 SCALE: 3/16" = 1'-0"



5 LOFT FRAMING PLAN
 S-5 SCALE: 3/16" = 1'-0"



4 ROOF FRAMING PLAN
 S-5 SCALE: 3/16" = 1'-0"



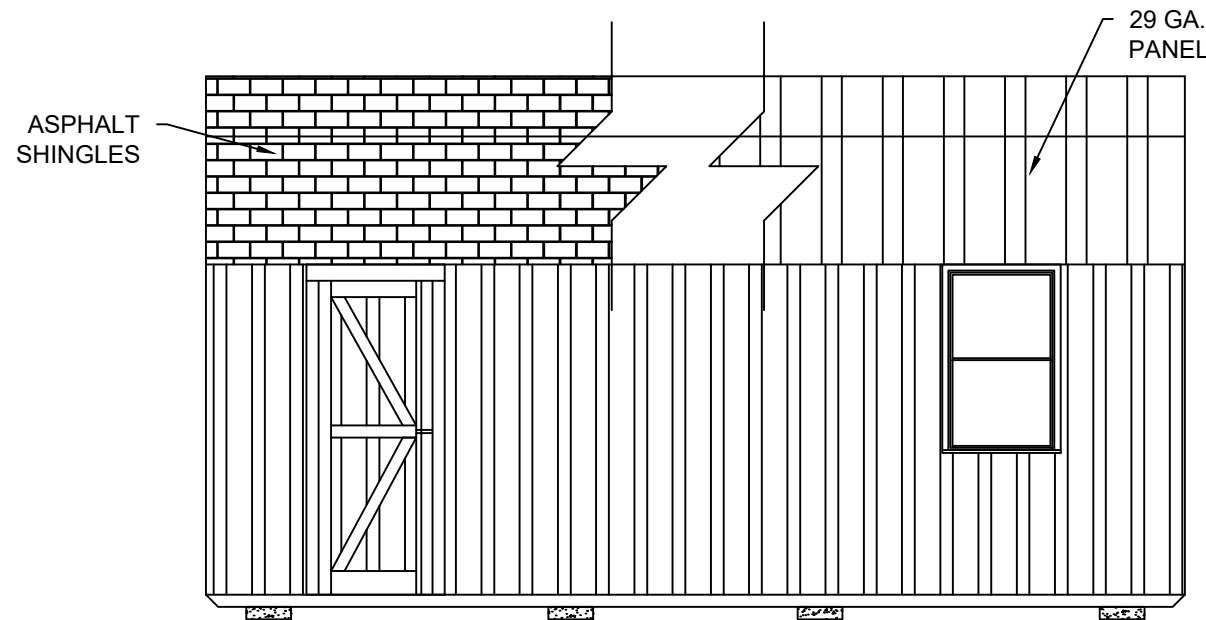
04/04/22
 1552 6TH ST., WINTER HAVEN, FL 33880
 (863)865-6502

FRAMING PLANS

DATE: 12/08/20	DRAWN BY: RD
SCALE: AS NOTED	CHECKED BY: KMB

SHEET: **S-5**
 SHEET 5 OF 21

THESE PLANS WERE DESIGNED IN ACCORDANCE WITH THE 2018 INTERNATIONAL BUILDING CODE WITH STATE AMENDMENTS, FBC 2020 (7TH ED.).

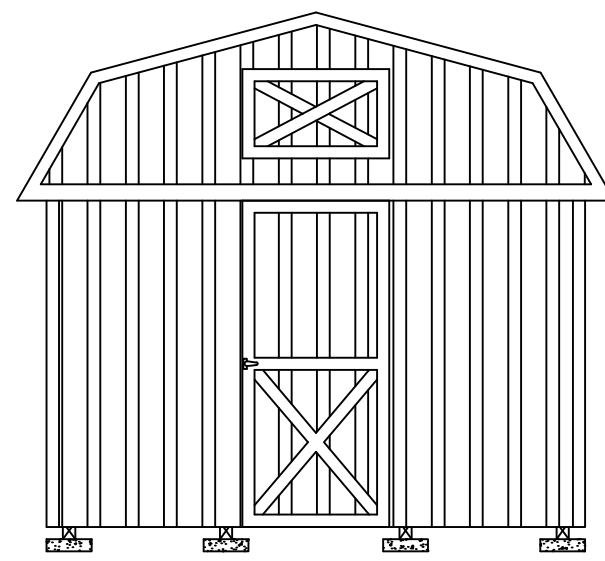


1 SIDE WALL ELEVATION WITH PANEL SIDING
 S-6 SCALE: 1/4" = 1'-0"

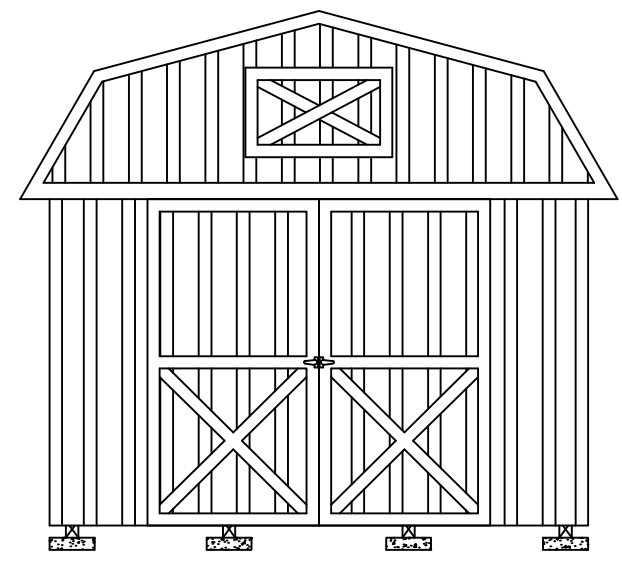
SHEARWALL WITH 19/32" T1-11¹ OR LP SMARTSIDE STRAND SUBSTRATE PANEL SIDING^{2,3}

FLOOR WIDTH (FT)	OPENING WIDTH		MAX BUILDING LENGTH		
	LONG SIDE WALL	SHORT END WALL	19/32" T1-11 ¹	19/32" LP PANEL ²	19/32" LP PANEL ³
7'-11½"	2'-0", 3'-0", 4'-0", 6'-0"	2'-0", 3'-0", 4'-0"	23'-9"	23'-9"	23'-9"
9'-11½"	2'-0", 3'-0", 4'-0", 6'-0", 7'-0"	2'-0", 3'-0", 4'-0", 6'-0"	29'-9"	29'-9"	29'-9"
		7'-0"		26'-0"	
11'-0"	2'-0", 3'-0", 4'-0", 6'-0", 7'-0", 8'-0"	2'-0", 3'-0", 4'-0", 6'-0", 7'-0"	32'-0"	32'-0"	32'-0"
		8'-0"		26'-0"	

- NOTES:**
- 19/32" T1-11 APA RATED SIDING 303-24 O.C. WITH 8D COMMON OR DEFORMED (0.131"X2-1/2") NAILS AT 6" O.C. IN FIELD AND 3" O.C. IN EDGES.
 - 19/32" LP SMARTSIDE STRAND SUBSTRATE PANEL SIDING WITH STAGGERED 8D COMMON OR DEFORMED (0.131"X2-1/2") NAILS AT 6" O.C. IN FIELD AND 3" O.C. IN EDGES.
 - 19/32" LP SMARTSIDE STRAND SUBSTRATE PANEL SIDING WITH STAGGERED 8D COMMON OR DEFORMED (0.131"X2-1/2") NAILS AT 6" O.C. IN FIELD AND 2" O.C. IN EDGES.
 - WINDOWS AND DOORS MAY BE LOCATED IN EITHER THE SIDE WALL OR ENDWALL. DOORS ARE PERMITTED TO BE IN BOTH ENDWALLS OR ENDWALL AND SIDEWALL IF REQUESTED BY CUSTOMER. LIMITATIONS ON THE TOTAL DIMENSIONS SHALL BE BASED ON THE SHEAR WALL HEIGHT TO WIDTH RATIO OF 3.5:1 AND SHALL NOT EXCEED (2/3) OF THE TOTAL LENGTH OF BUILDING.
 - DOOR AND WINDOW SHALL BE LOCATED SUCH THAT THEY ARE AT LEAST 3'3" APART.
 - EDGE NAILING SHALL BE PROVIDED AT TOP PLATE IN ALL END WALLS.
 - PROVIDE BLOCKING AT ALL UNSUPPORTED EDGES OF WALL SHEATHING.



SAMPLE: 11'-0" WIDE UNIT WITH 3'-0" DOOR



SAMPLE: 11'-0" WIDE UNIT WITH 7'-0" DOOR

2 ENDWALL ELEVATION WITH PANEL SIDING
 S-6 SCALE: 1/4" = 1'-0"

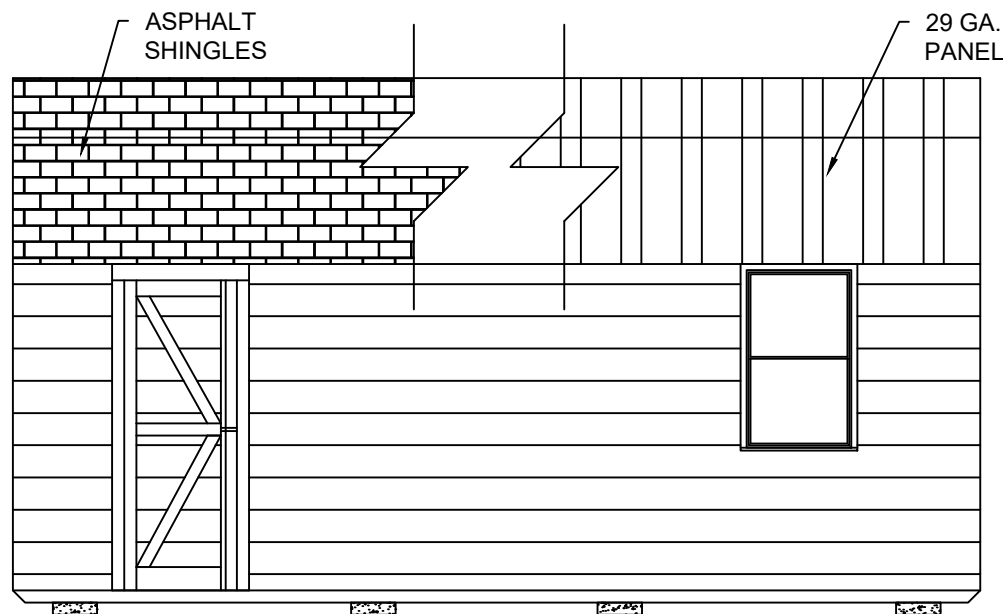
04/04/22

1552 6TH ST., WINTER HAVEN, FL 33880
(863)865-6502

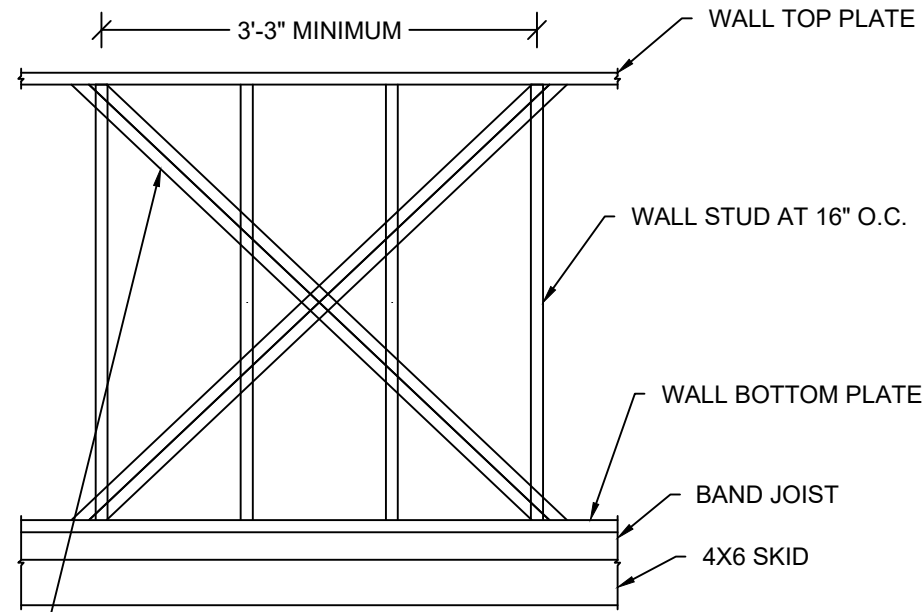
ELEVATIONS AND SHEARWALL	
DATE: 12/08/20	DRAWN BY: RD
SCALE: AS NOTED	CHECKED BY: KMB

SHEET:
S-6
 SHEET 6 OF 21

THESE PLANS WERE DESIGNED IN ACCORDANCE WITH THE 2018 INTERNATIONAL BUILDING CODE WITH STATE AMENDMENTS, FBC 2020 (7TH ED.).

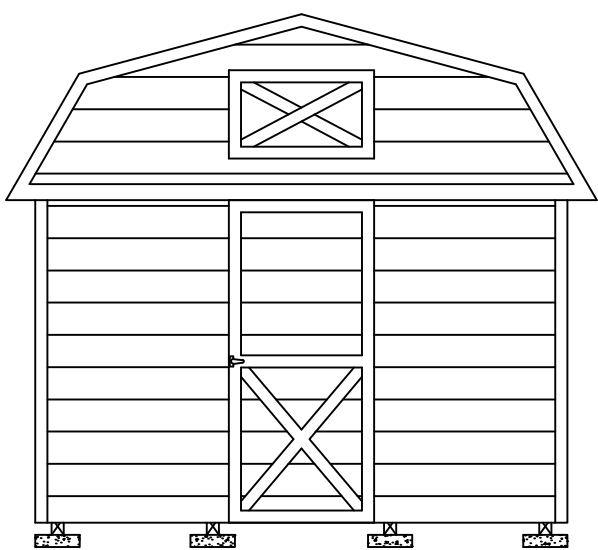


1 SIDE WALL ELEVATION WITH LAP SIDING
S-6A SCALE: 1/4" = 1'-0"



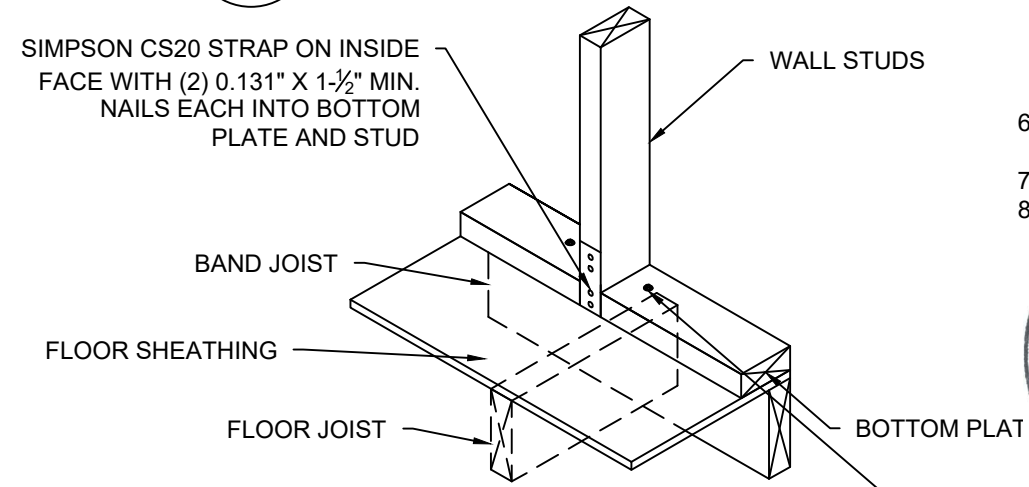
(2) SIMPSON CS20 (33MIL X 1-1/4", GRADE 40 STEEL, G60 COATING) X-STRAP OR EQUIVALENT ON INSIDE FACE OF WALL STUD. ATTACH STRAPS TO WALL TOP & BOTTOM PLATES WITH (5) 0.131" x 2-1/4" NAILS STAGGERED. STRAP MAY BE WRAPPED AROUND WALL TOP & BOTTOM PLATES.
ALTERNATE: 7/16" APA RATED SHEATHING ON OUTSIDE FACE OF WALL STUD FASTENED WITH 8d COMMON OR DEFORMED (0.131" x 2-1/2") NAILS AT 6" O.C. IN FIELD AND 3" O.C. AT EDGES.

2 PARTIAL SIDE WALL FRAMING ELEVATION WITH LAP SIDING
S-6A SCALE: NTS



SAMPLE: 11'-0" WIDE UNIT WITH 3'-0" DOOR

4 ENDWALL ELEVATION WITH LAP SIDING
S-6A SCALE: 1/4" = 1'-0"



(2) 1/4" x 4" HEX LAG SCREWS WITHIN 3" ON EITHER SIDE OF STUD AT X-BRACE END LOCATIONS AND CENTERED THRU BAND JOIST. PREDRILL MAX. 1/4" DIA. HOLE THRU BOTTOM PLATE AND 0.15" DIA. HOLE THRU SHEATHING AND BAND JOIST.

3 WALL STUD TIEDOWN FOR X-BRACE OPTION
S-6A SCALE: NTS

SHEARWALL WITH LP SMARTSIDE LAP SIDING ¹			
FLOOR WIDTH (FT)	OPENING WIDTH		MAX BUILDING LENGTH
	LONG SIDE WALL ²	SHORT END WALL ^{3,4}	
7'-11 1/2"	2'-0", 3'-0", 4'-0", 6'-0", 8'-0"	2'-0", 3'-0", 4'-0"	23'-9"
9'-11 1/2"	2'-0", 3'-0", 4'-0", 6'-0", 7'-0", 8'-0"	2'-0", 3'-0", 4'-0", 6'-0", 7'-0"	29'-9"
11'-0"	2'-0", 3'-0", 4'-0", 6'-0", 7'-0", 8'-0"	2'-0", 3'-0", 4'-0", 6'-0", 7'-0", 8'-0"	32'-0"

NOTES:

- MIN. 0.45" THICK LP SMARTSIDE 12" BOLD PROFILES DOUBLE 5" FIBER SUBSTRATE LAP SIDING PER ICC-ES ESR 3090, TABLES 2A, 2B AND 2C
- ON LONG SIDE WALL, ATTACH LAP SIDING TO EACH WALL STUD WITH MINIMUM 8d SINKER NAILS (0.113" X 2-3/8") AT 3/8" FROM EACH END, AND 3 NAILS PER STUD -- 3" FROM TOP EDGE, IN THE MIDDLE AND 1-1/2" FROM BOTTOM EDGE. PROVIDE X-STRAP OR SHEATHING ON WALL PER 2/S-6A.
- ON SHORT END WALL, ATTACH LAP SIDING TO SHEATHING WITH MINIMUM 8d SINKER NAILS (0.113" X 2-3/8") AT 3/8" FROM EACH END, AND 3 NAILS PER 16" SPACING -- 3" FROM TOP EDGE, IN THE MIDDLE AND 1-1/2" FROM BOTTOM EDGE.
- ON SHORT END WALL WITHOUT AN OPENING, PROVIDE MIN. 7/16" APA RATED SHEATHING ON EXTERIOR FACE FASTENED TO STUDS WITH 8d COMMON OR DEFORMED (0.131" x 2-1/2") NAILS AT 6" O.C. IN FIELD AND 4" O.C. AT EDGES. ON SHORT END WALL WITH AN OPENING, PROVIDE 19/32" APA RATED SHEATHING ON EXTERIOR FACE FASTENED TO STUDS WITH 8d COMMON OR DEFORMED (0.131" x 2-1/2") NAILS AT 6" O.C. IN FIELD AND 3" O.C. AT EDGES. ALTERNATE FOR SHORT END WALL WITH OPENING:
ON EXTERIOR FACE OF TRUSS - PROVIDE PANEL SIDING PER SHEET S-6
ON EXTERIOR FACE OF WALL - PROVIDE LAP SIDING AND
ON INTERIOR FACE OF WALL - PROVIDE 19/32" APA RATED SHEATHING.
- WINDOWS AND DOORS MAY BE LOCATED IN EITHER THE SIDE WALL OR ENDWALL. DOORS ARE PERMITTED TO BE IN BOTH ENDWALLS OR ENDWALL AND SIDEWALL IF REQUESTED BY CUSTOMER. LIMITATIONS ON THE TOTAL DIMENSIONS SHALL BE BASED ON THE SHEAR WALL HEIGHT TO WIDTH RATIO OF 3.5:1 AND SHALL NOT EXCEED (2/3) OF THE TOTAL LENGTH OF BUILDING.
- DOOR AND WINDOW SHALL BE LOCATED SUCH THAT THEY ARE AT LEAST 3'-3" APART.
- EDGE NAILING SHALL BE PROVIDED AT TOP PLATE IN ALL END WALLS.
- PROVIDE BLOCKING AT ALL UNSUPPORTED EDGES OF WALL SHEATHING.

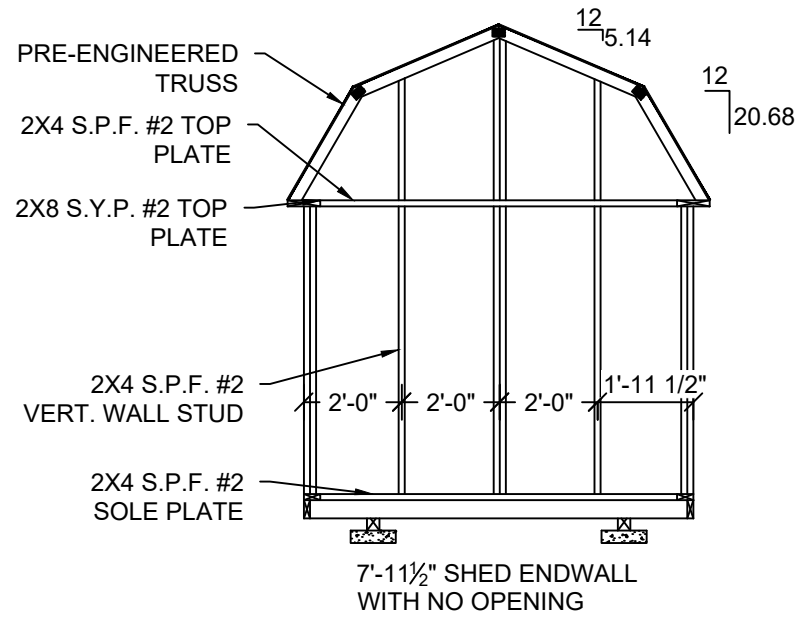


04/04/22
1552 6TH ST., WINTER HAVEN, FL 33880
(863)865-6502

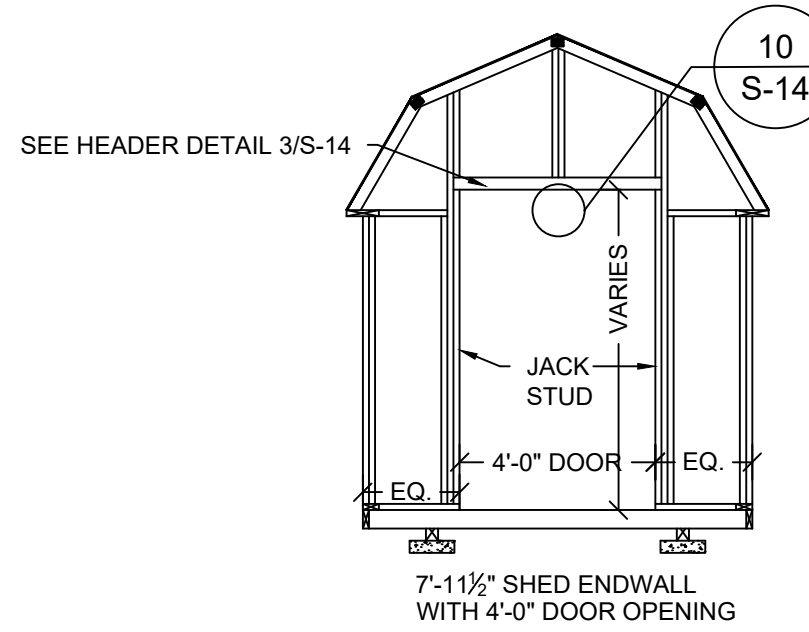
ELEVATIONS AND SHEARWALL	
DATE: 12/08/20	DRAWN BY: RD
SCALE: AS NOTED	CHECKED BY: KMB

SHEET:
S-6A
SHEET 7 OF 21

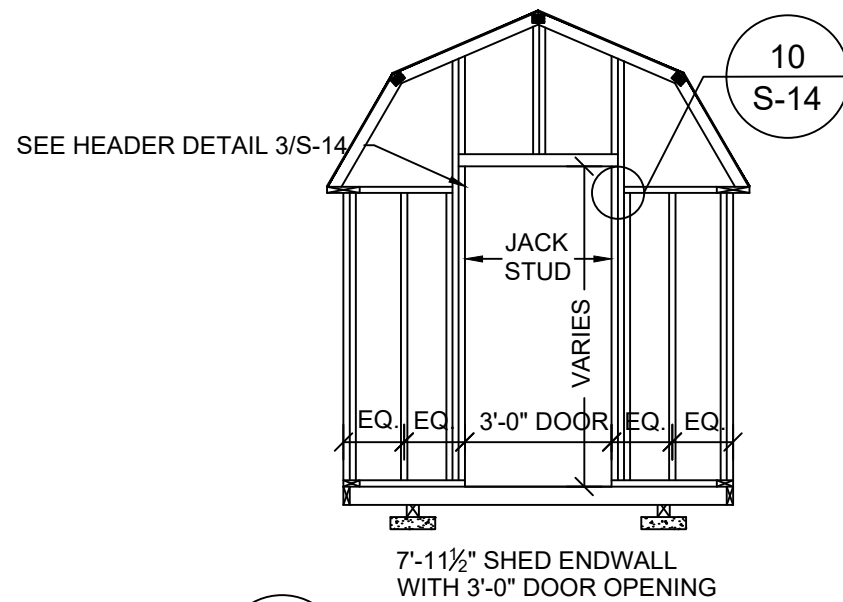
THESE PLANS WERE DESIGNED IN ACCORDANCE WITH THE 2018 INTERNATIONAL BUILDING CODE WITH STATE AMENDMENTS, FBC 2020 (7TH ED.).



1 **FRAMING ELEVATION**
 S-7 SCALE: 1/4" = 1'-0"



2 **FRAMING ELEVATION**
 S-7 SCALE: 1/4" = 1'-0"



3 **FRAMING ELEVATION**
 S-7 SCALE: 1/4" = 1'-0"



04/04/22

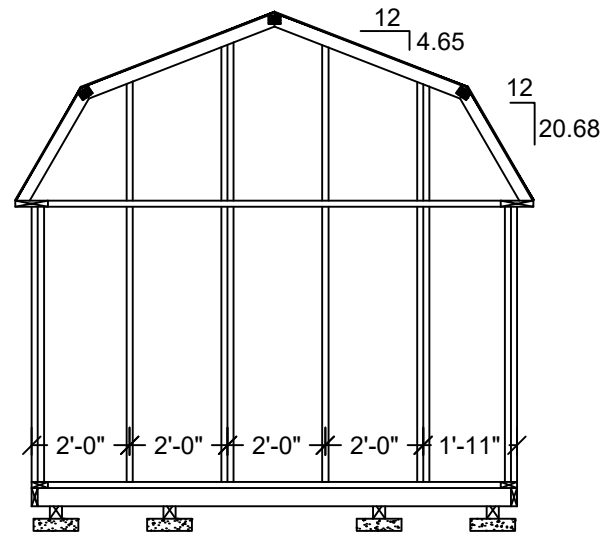
1552 6TH ST., WINTER HAVEN, FL 33880
 (863)865-6502

7'-11 1/2" SHED
 FRAMING ELEVATIONS

DATE: 12/08/20	DRAWN BY: RD
SCALE: AS NOTED	CHECKED BY: KMB

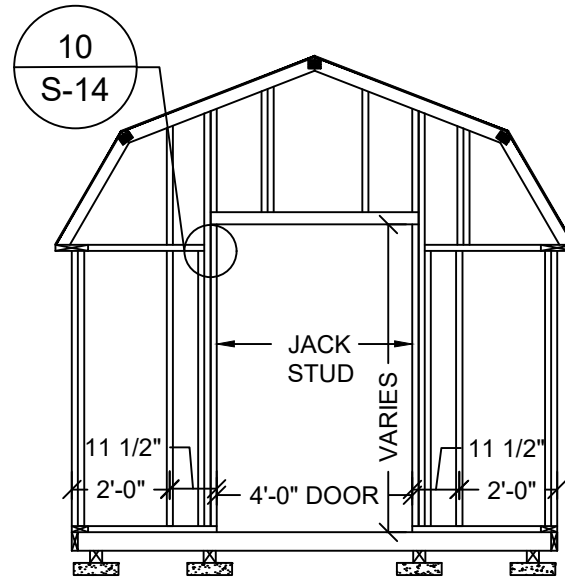
SHEET:
S-7
 SHEET 8 OF 21

THESE PLANS WERE DESIGNED IN ACCORDANCE WITH THE 2018 INTERNATIONAL BUILDING CODE WITH STATE AMENDMENTS, FBC 2020 (7TH ED.).



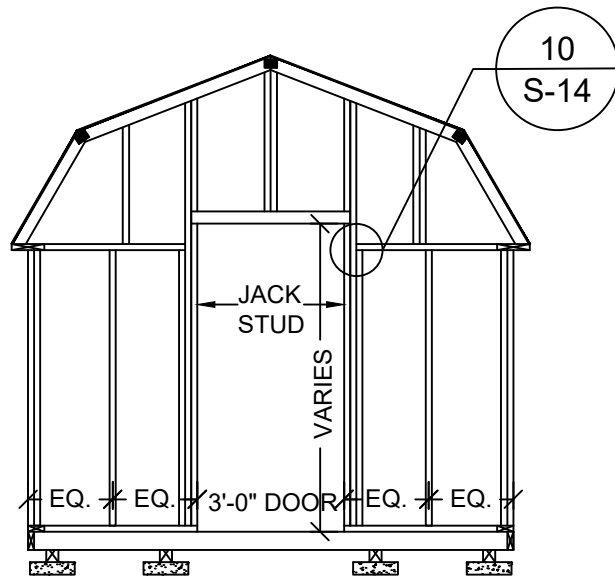
9'-11½" SHED ENDWALL
WITH NO OPENING

1
S-8 **FRAMING ELEVATION**
SCALE: 1/4" = 1'-0"



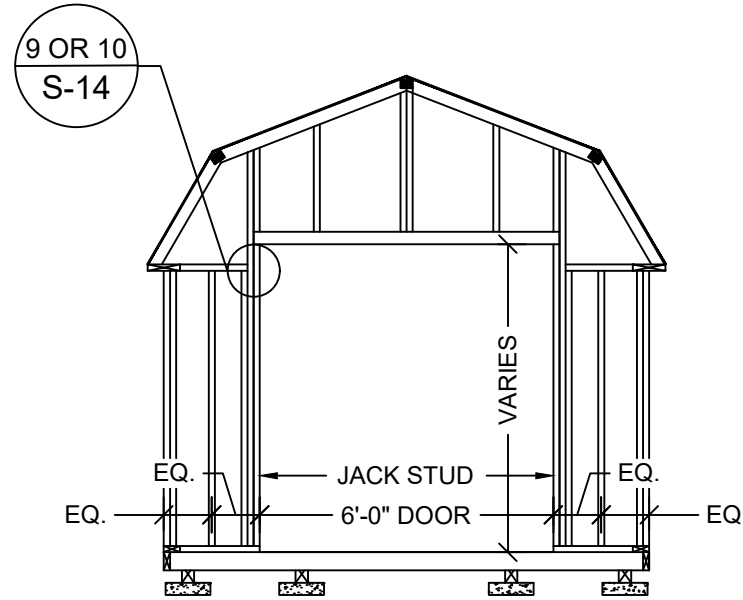
9'-11½" SHED ENDWALL
WITH 4'-0" DOOR OPENING

2
S-8 **FRAMING ELEVATION**
SCALE: 1/4" = 1'-0"



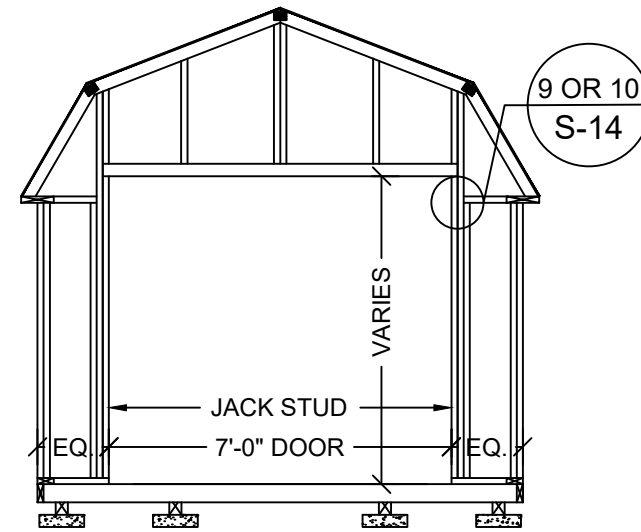
9'-11½" SHED ENDWALL
WITH 3'-0" DOOR OPENING

3
S-8 **FRAMING ELEVATION**
SCALE: 1/4" = 1'-0"



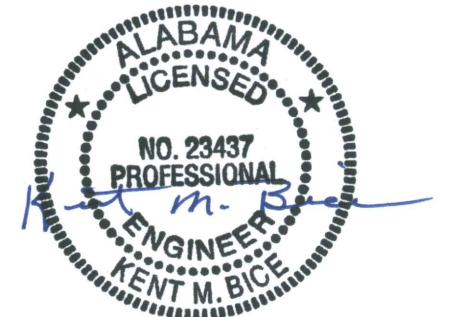
9'-11½" SHED ENDWALL
WITH 6'-0" DOOR OPENING

4
S-8 **FRAMING ELEVATION**
SCALE: 1/4" = 1'-0"



9'-11½" SHED ENDWALL
WITH 7'-0" DOOR OPENING

5
S-8 **FRAMING ELEVATION**
SCALE: 1/4" = 1'-0"



04/04/22

1552 6TH ST., WINTER HAVEN, FL 33880
(863)865-6502

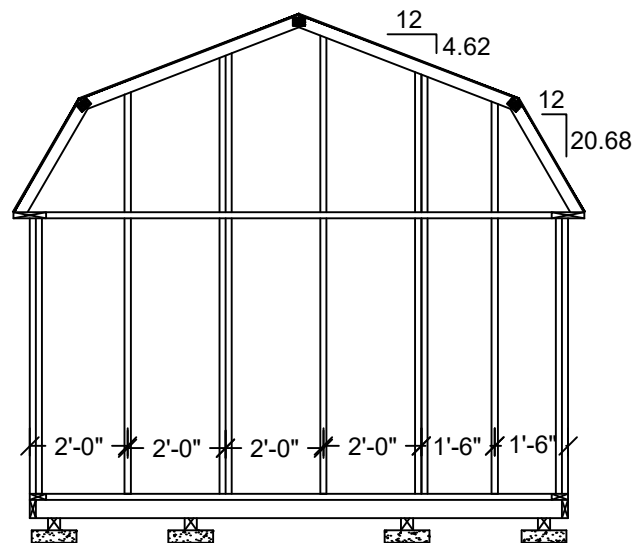
**9'-11 1/2" SHED
FRAMING ELEVATIONS**

DATE: 12/08/20 DRAWN BY: RD
SCALE: AS NOTED CHECKED BY: KMB

SHEET:

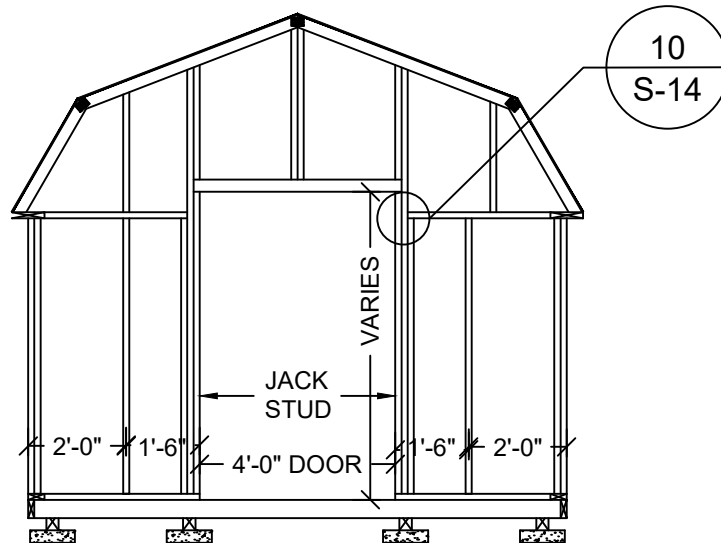
S-8

SHEET 9 OF 21



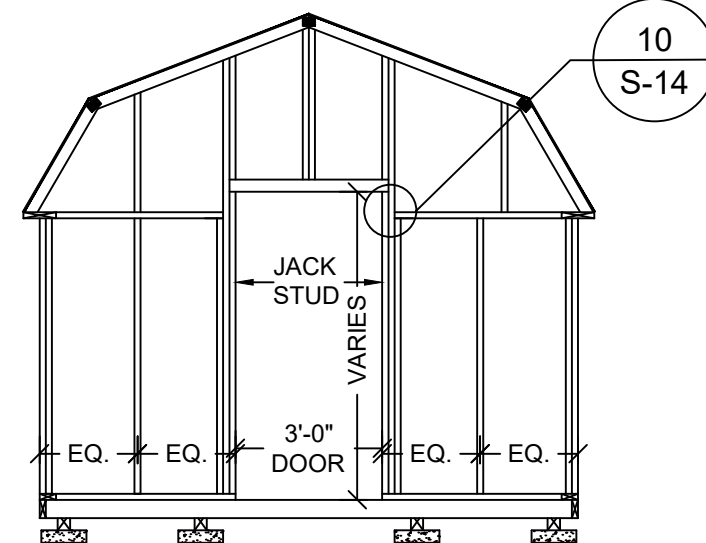
11'-0" SHED ENDWALL WITH NO OPENING

1 FRAMING ELEVATION
S-9 SCALE: 1/4" = 1'-0"



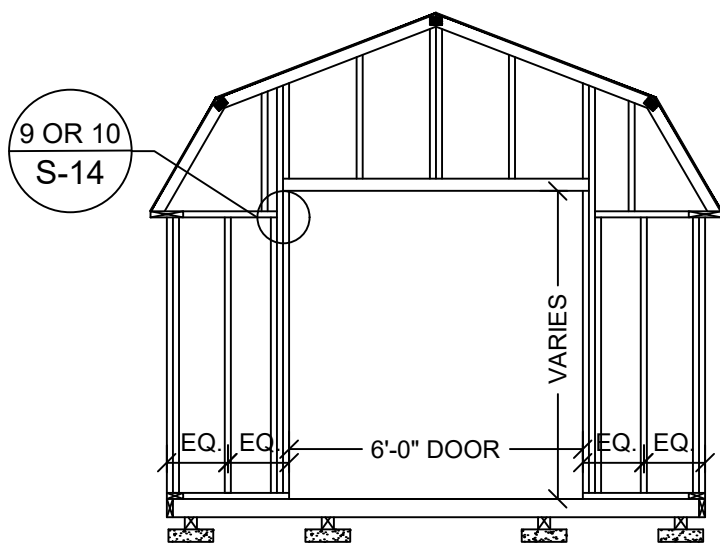
11'-0" SHED ENDWALL WITH 4'-0" DOOR OPENING

2 FRAMING ELEVATION
S-9 SCALE: 1/4" = 1'-0"



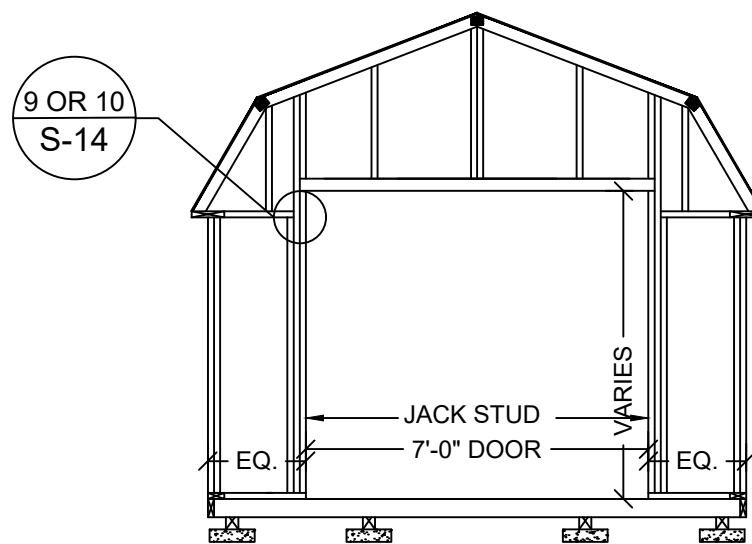
11'-0" SHED ENDWALL WITH 3'-0" DOOR OPENING

3 FRAMING ELEVATION
S-9 SCALE: 1/4" = 1'-0"



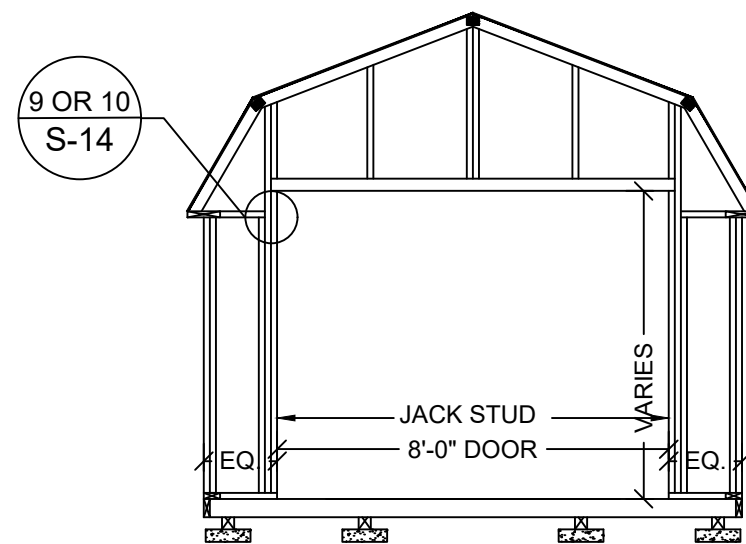
11'-0" SHED ENDWALL WITH 6'-0" DOOR OPENING

4 FRAMING ELEVATION
S-9 SCALE: 1/4" = 1'-0"



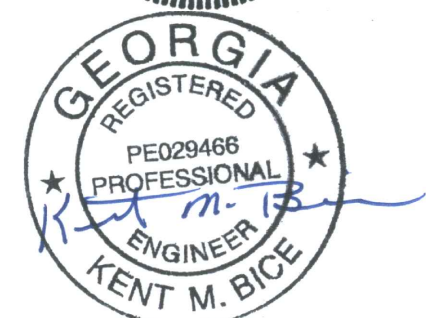
11'-0" SHED ENDWALL WITH 7'-0" DOOR OPENING

5 FRAMING ELEVATION
S-9 SCALE: 1/4" = 1'-0"



11'-0" SHED ENDWALL WITH 8'-0" DOOR OPENING

6 FRAMING ELEVATION
S-9 SCALE: 1/4" = 1'-0"



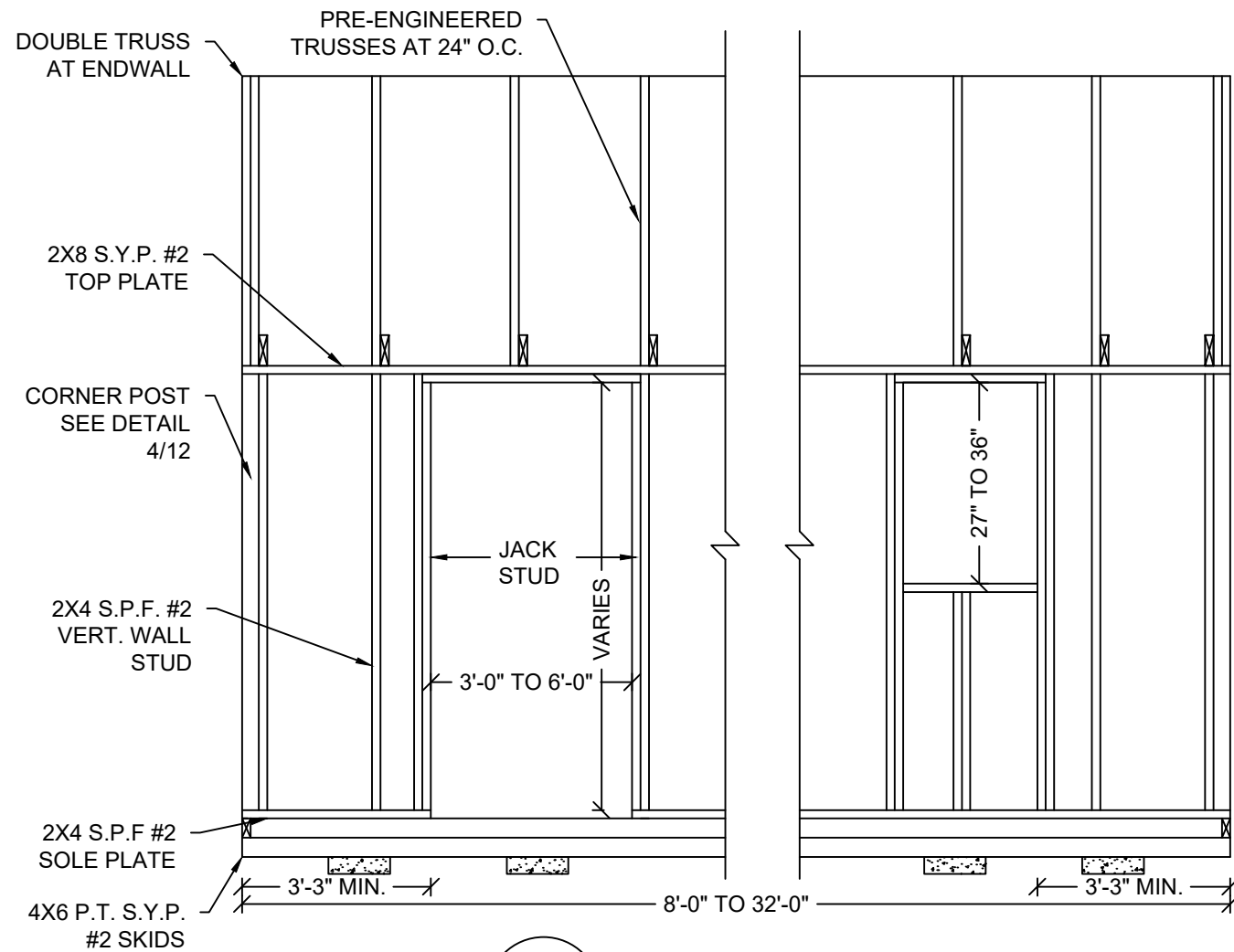
04/04/22

1552 6TH ST., WINTER HAVEN, FL 33880
(863)865-6502

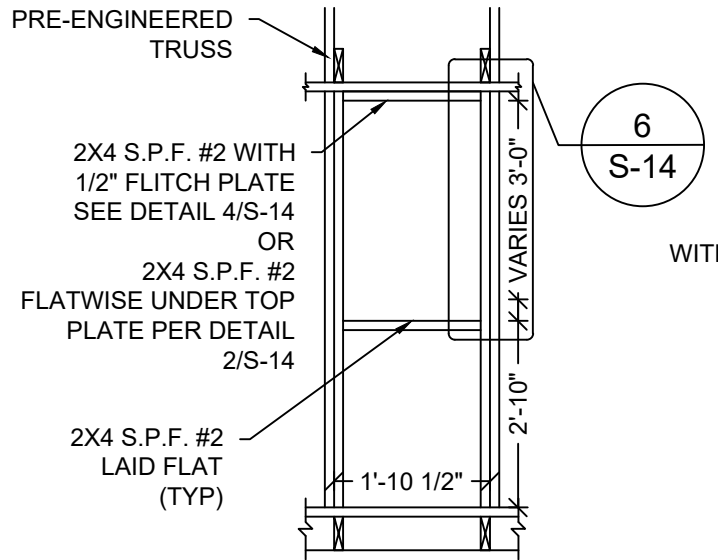
11'-0" SHED FRAMING ELEVATIONS	
DATE: 12/08/20	DRAWN BY: RD
SCALE: AS NOTED	CHECKED BY: KMB

SHEET:
S-9
SHEET 10 OF 21

THESE PLANS WERE DESIGNED IN ACCORDANCE WITH THE 2018 INTERNATIONAL BUILDING CODE WITH STATE AMENDMENTS, FBC 2020 (7TH ED.).



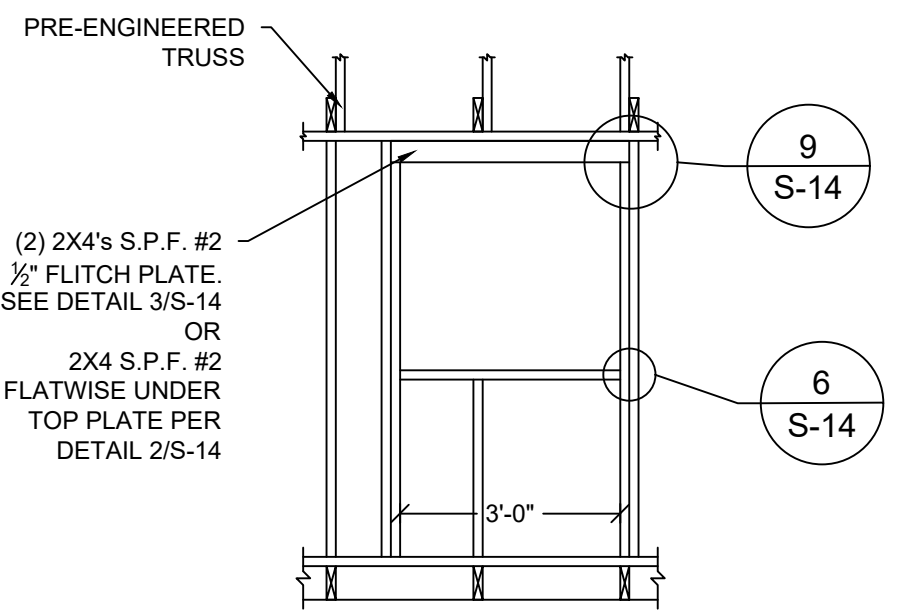
1 FRAMING ELEVATION
S-10 SCALE: 3/8" = 1'-0"



SIDEWALL OR ENDWALL
2'-0" NOMINAL WINDOW HEADER AND SILL

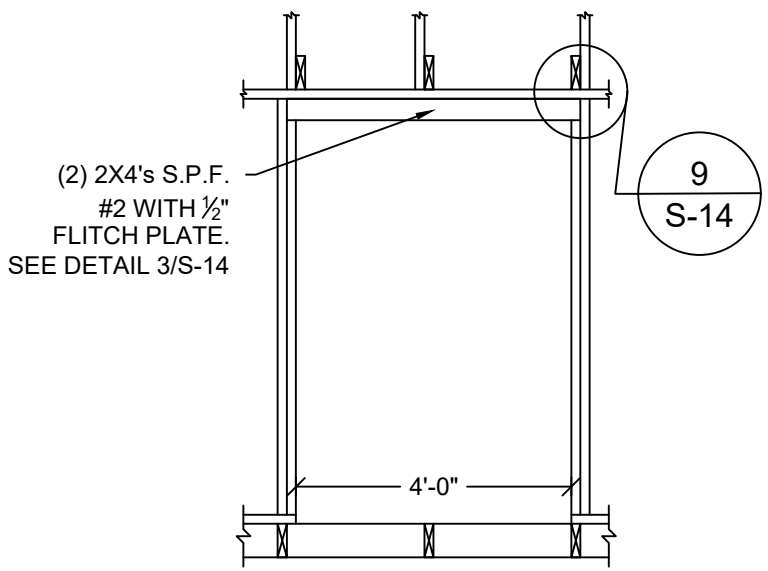
2 FRAMING ELEVATION
S-10 SCALE: 3/8" = 1'-0"

NOTE:
FOR ALL FASTENING OF FRAMING MEMBERS NOT NOTED ON THIS SHEET REFER TO FASTENING SCHEDULE ON SHEET S-4.



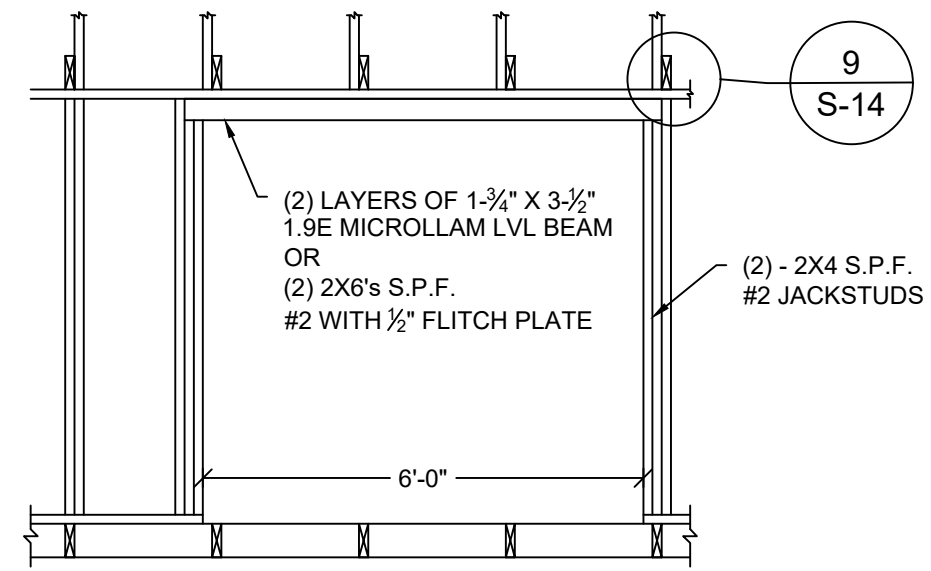
SIDEWALL
3'-0" OPENING HEADER AND SILL

3 FRAMING ELEVATION
S-10 SCALE: 3/8" = 1'-0"



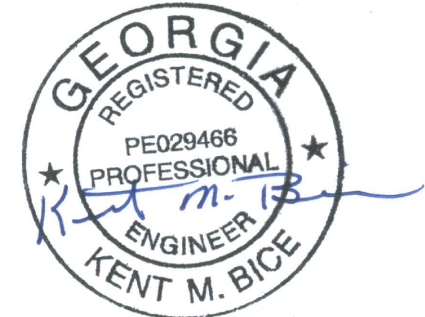
SIDEWALL
4'-0" DOOR OPENING

4 FRAMING ELEVATION
S-10 SCALE: 3/8" = 1'-0"



SIDEWALL
6'-0" DOOR OPENING

5 FRAMING ELEVATION
S-10 SCALE: 3/8" = 1'-0"



04/04/22

1552 6TH ST., WINTER HAVEN, FL 33880
(863)865-6502

SIDE WALL ELEVATION

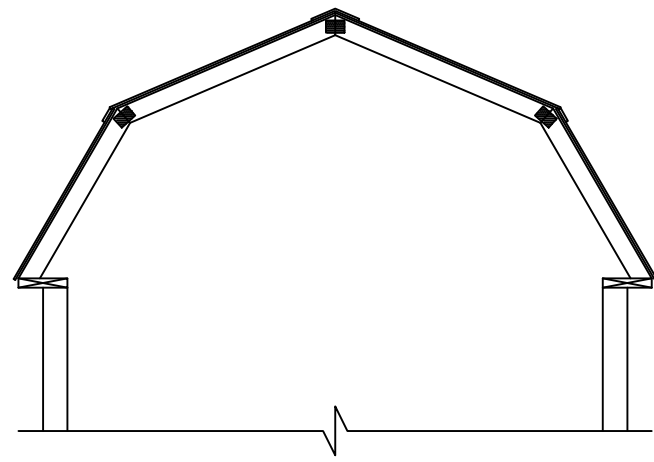
DATE: 12/08/20 DRAWN BY: RD
SCALE: AS NOTED CHECKED BY: KMB

SHEET:

S-10

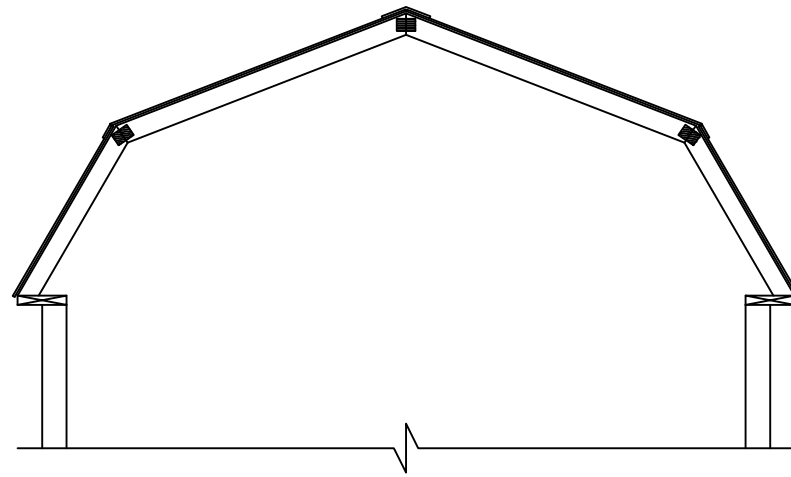
SHEET 11 OF 21

THESE PLANS WERE DESIGNED IN ACCORDANCE WITH THE 2018 INTERNATIONAL BUILDING CODE WITH STATE AMENDMENTS, FBC 2020 (7TH ED.).



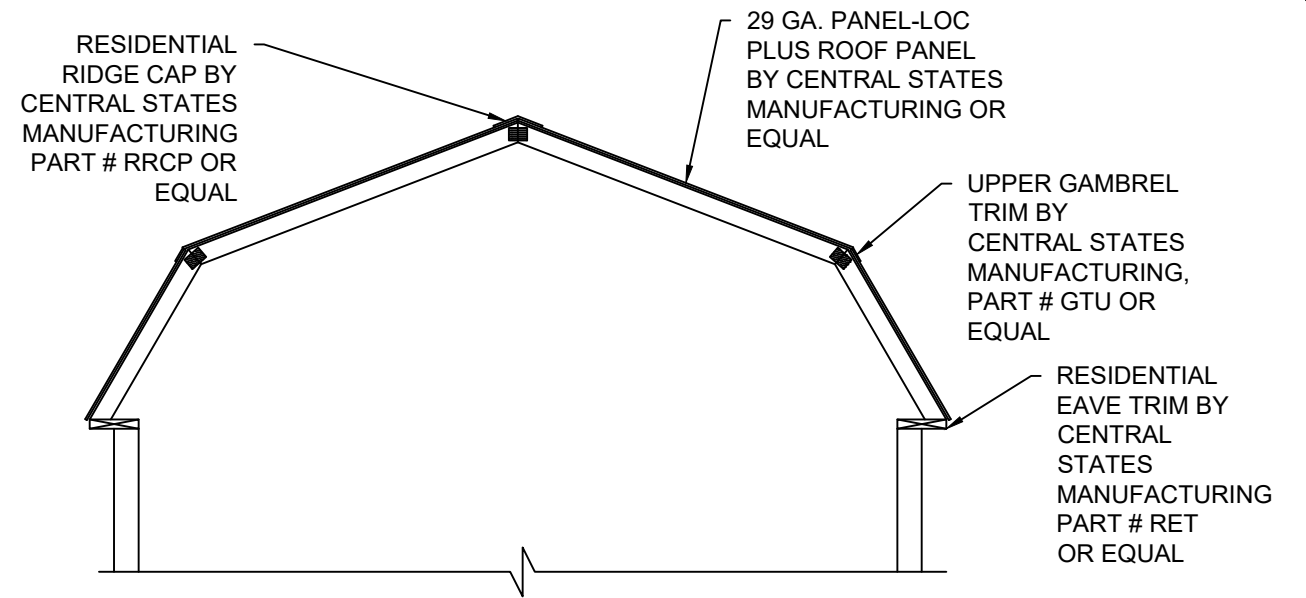
7'-11½" WIDE
OPTIONAL METAL ROOF

1
S-11 **CROSS SECTION**
SCALE: 3/8" = 1'-0"



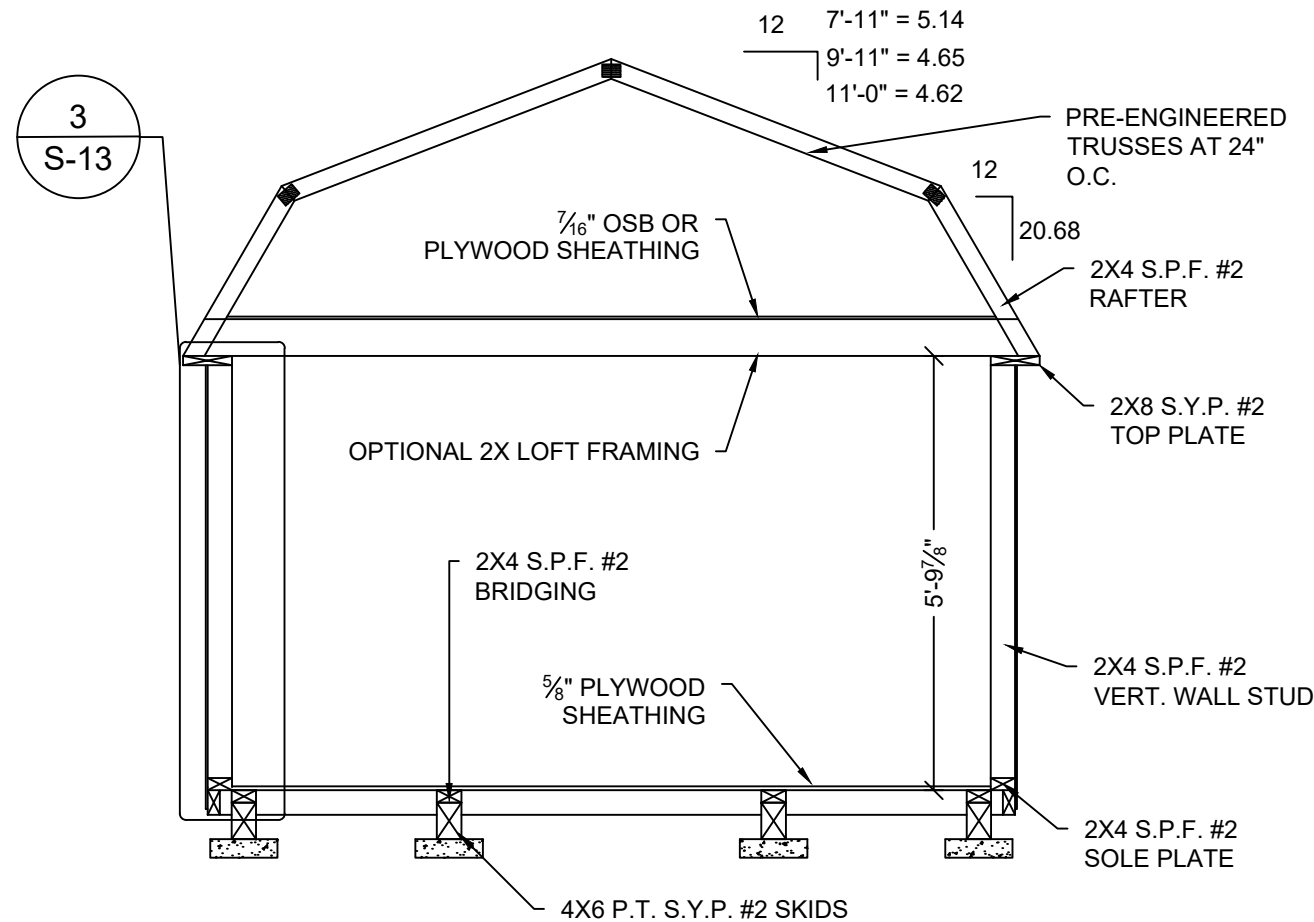
9'-11½" WIDE
OPTIONAL METAL ROOF

2
S-11 **CROSS SECTION**
SCALE: 3/8" = 1'-0"

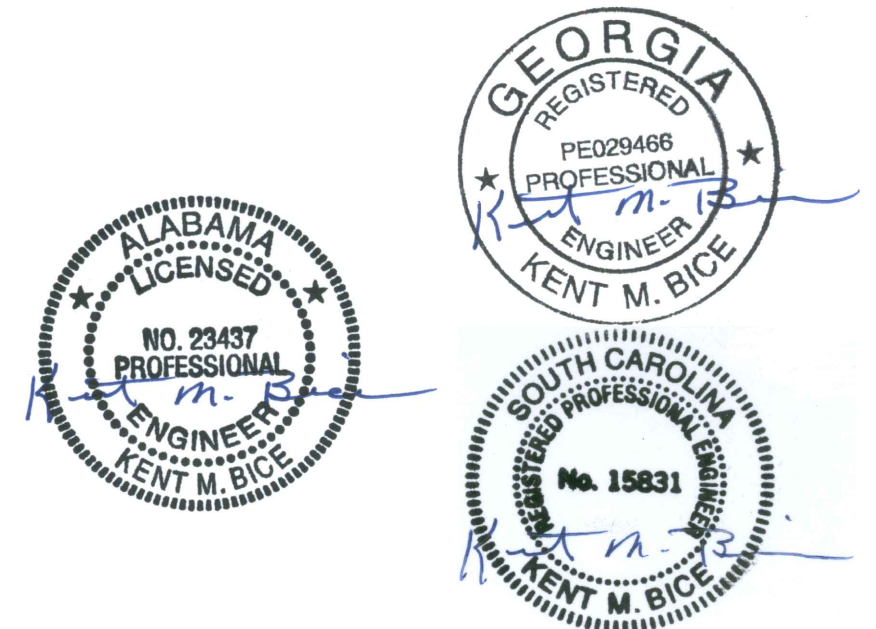


11'-0" WIDE
OPTIONAL METAL ROOF

3
S-11 **CROSS SECTION**
SCALE: 3/8" = 1'-0"



4
S-11 **CROSS SECTION**
SCALE: 3/8" = 1'-0"



04/04/22

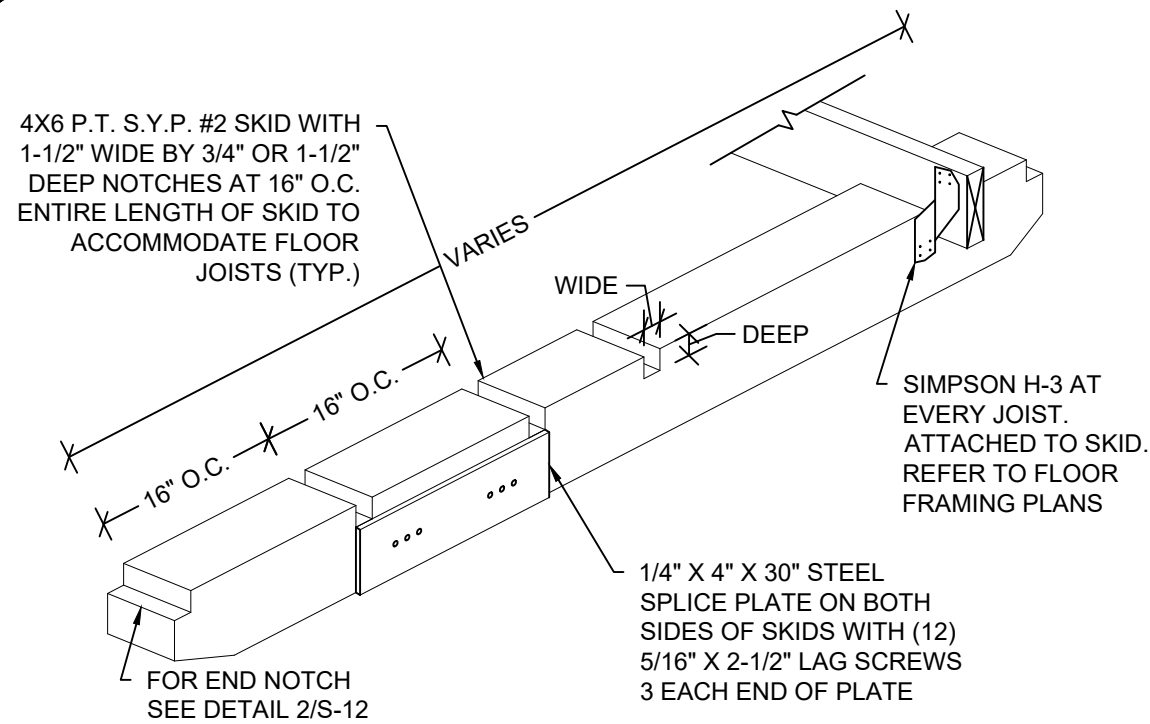
1552 6TH ST., WINTER HAVEN, FL 33880
(863)865-6502

CROSS SECTIONS

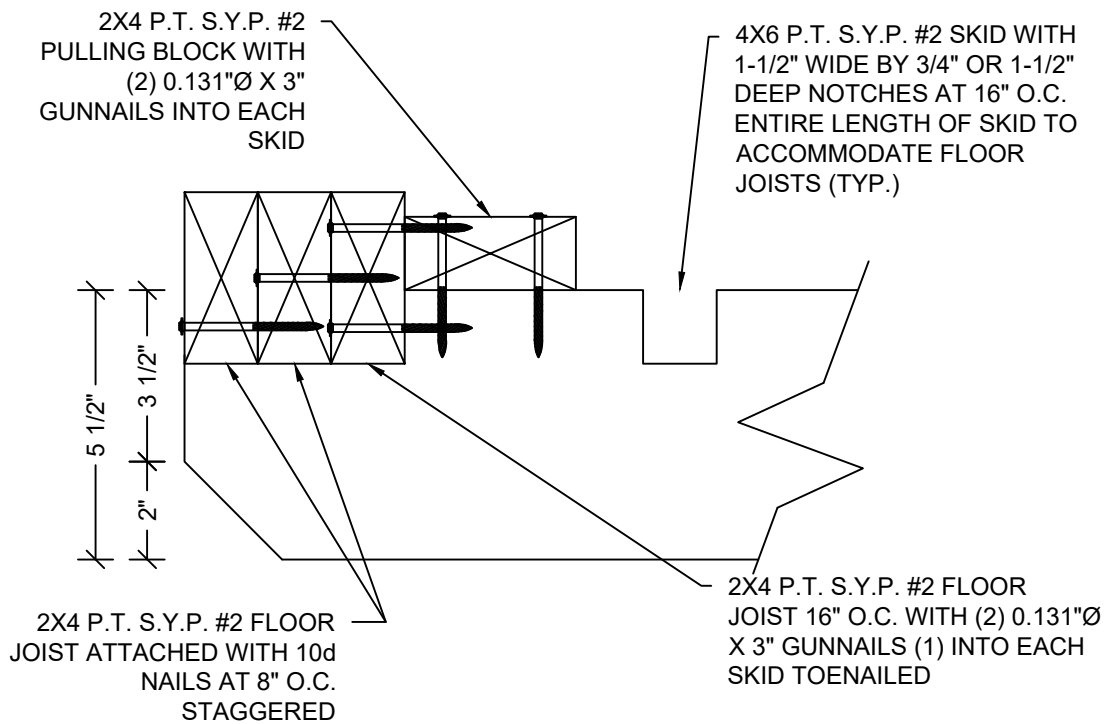
DATE: 12/08/20 DRAWN BY: RD
SCALE: AS NOTED CHECKED BY: KMB

SHEET:
S-11
SHEET 12 OF 21

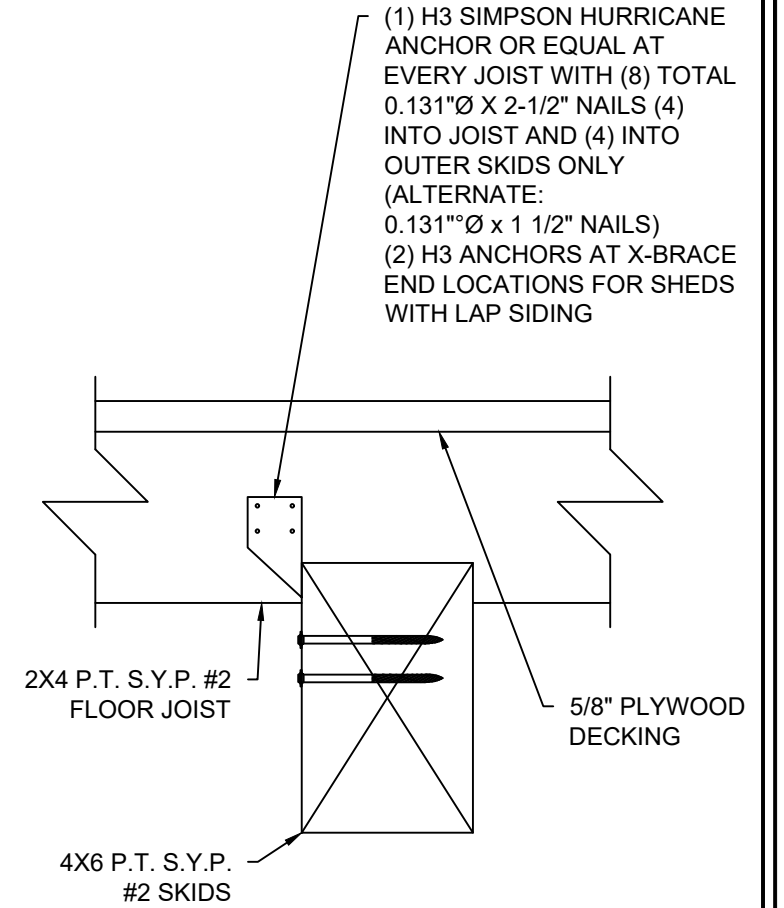
THESE PLANS WERE DESIGNED IN ACCORDANCE WITH THE 2018 INTERNATIONAL BUILDING CODE WITH STATE AMENDMENTS, FBC 2020 (7TH ED.).



1 ISOMETRIC SKID DETAIL
S-12 SCALE: N.T.S.

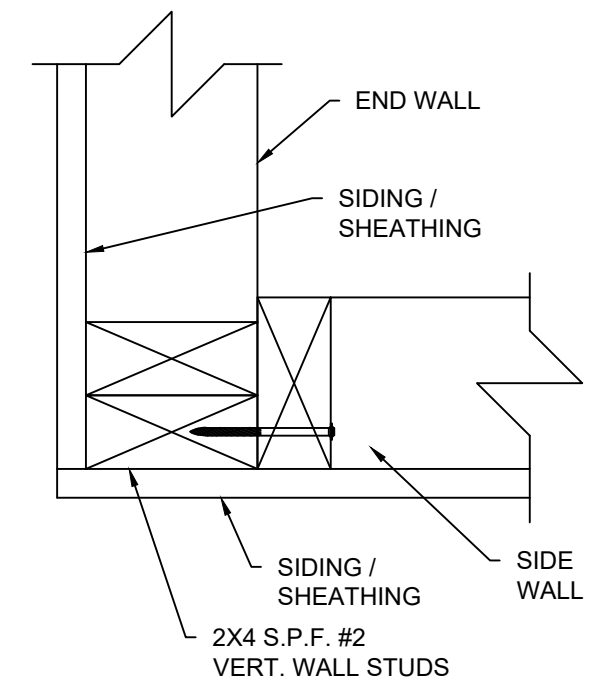


2 END WALL JOIST DETAIL
S-12 SCALE: 3" = 1'-0"

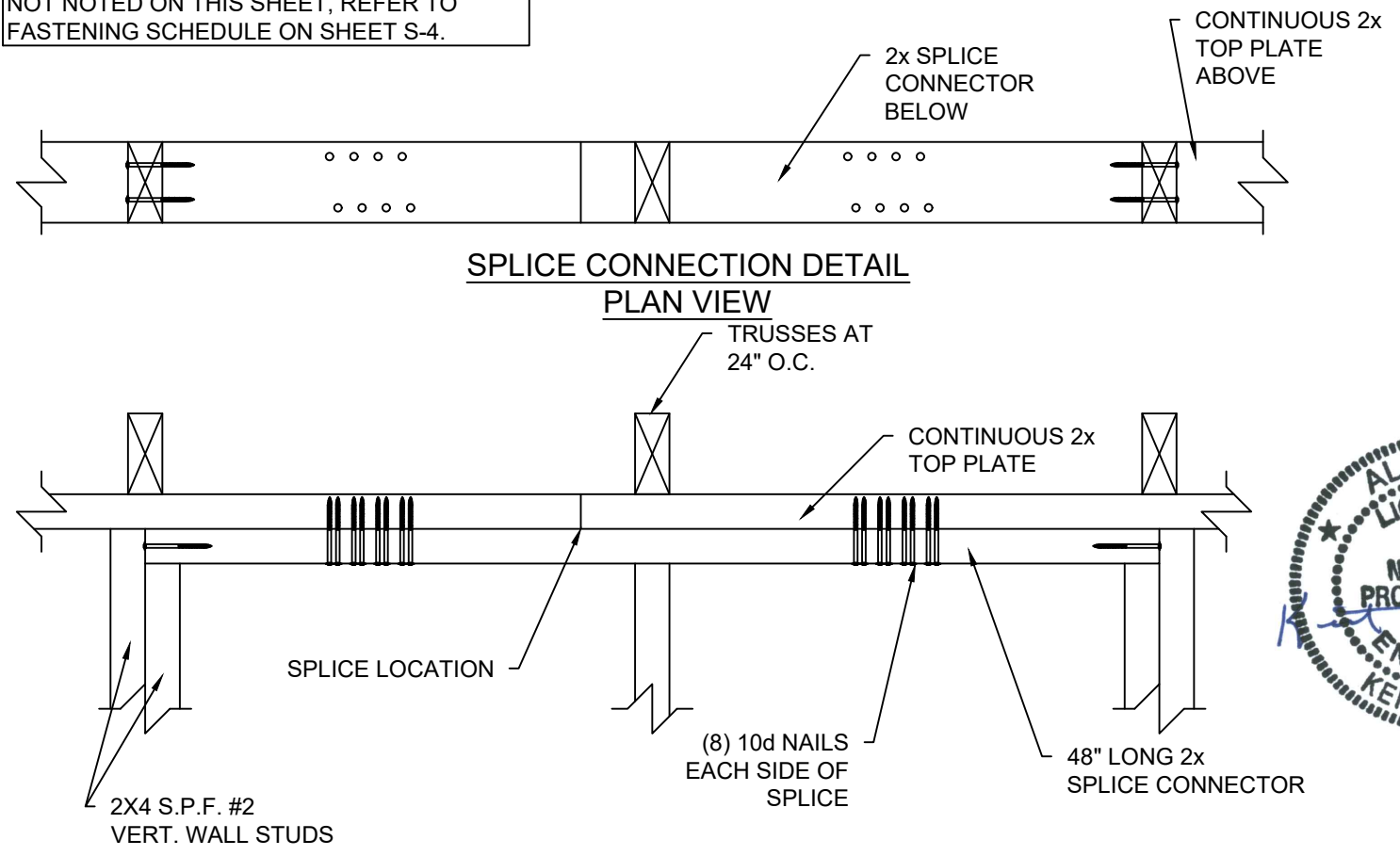


3 SKID CONNECTION DETAIL
S-12 SCALE:

NOTE:
FOR ALL FASTENERS OF FRAMING MEMBERS NOT NOTED ON THIS SHEET, REFER TO FASTENING SCHEDULE ON SHEET S-4.



4 CORNER CONNECTION DETAIL
S-12 SCALE 3" = 1'-0"



5 SPLICE CONNECTION DETAIL
S-12 SCALE: 1-1/2" = 1'-0"

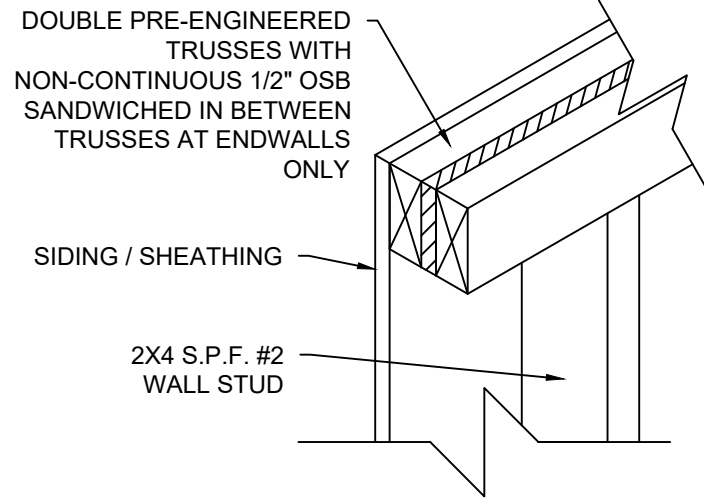


1552 6TH ST., WINTER HAVEN, FL 33880
(863)865-6502

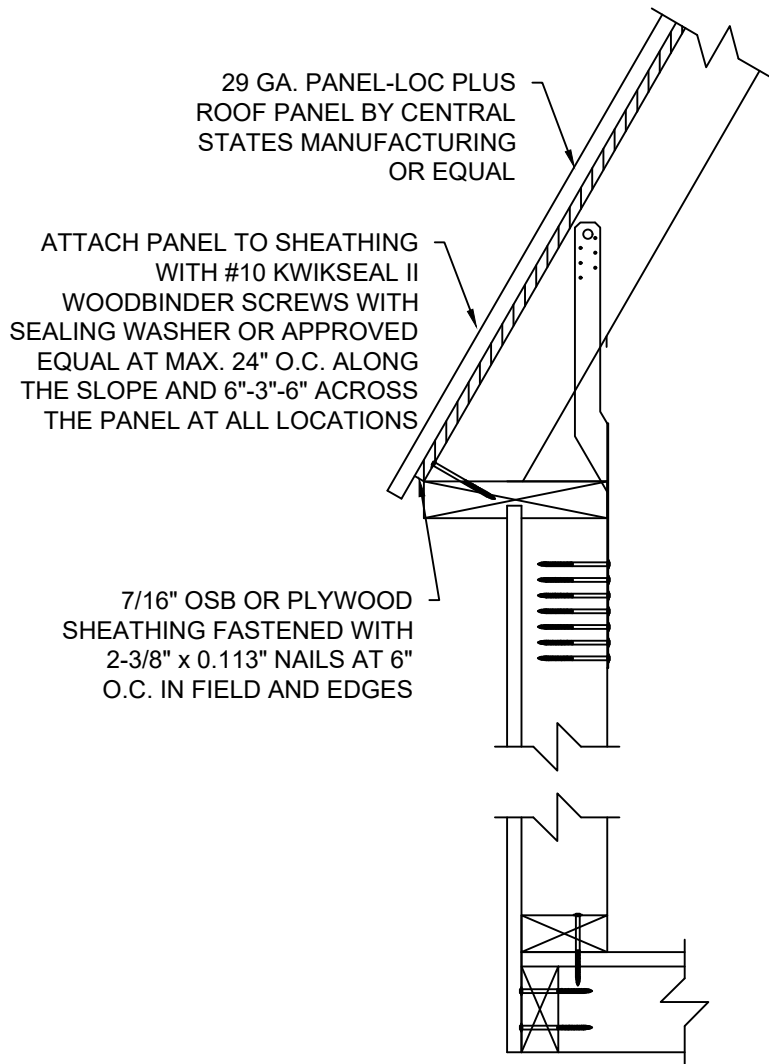
DETAILS	
DATE: 12/08/20	DRAWN BY: RD
SCALE: AS NOTED	CHECKED BY: KMB

SHEET: **S-12**
SHEET 13 OF 21

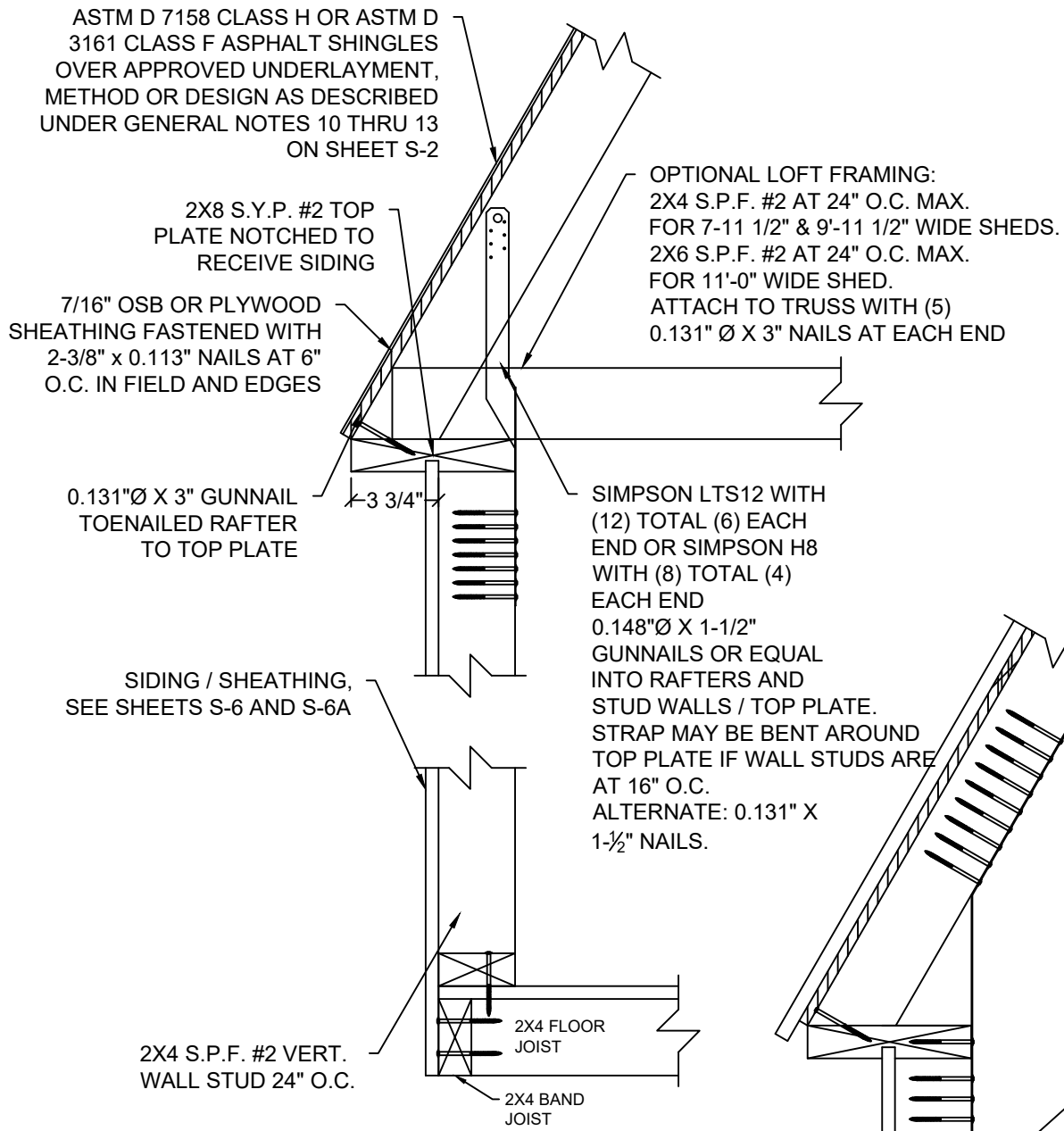
THESE PLANS WERE DESIGNED IN ACCORDANCE WITH THE 2018 INTERNATIONAL BUILDING CODE WITH STATE AMENDMENTS, FBC 2020 (7TH ED.).



1
S-13 **DOUBLE TRUSS DETAIL**
SCALE: 1-1/2" = 1'-0"

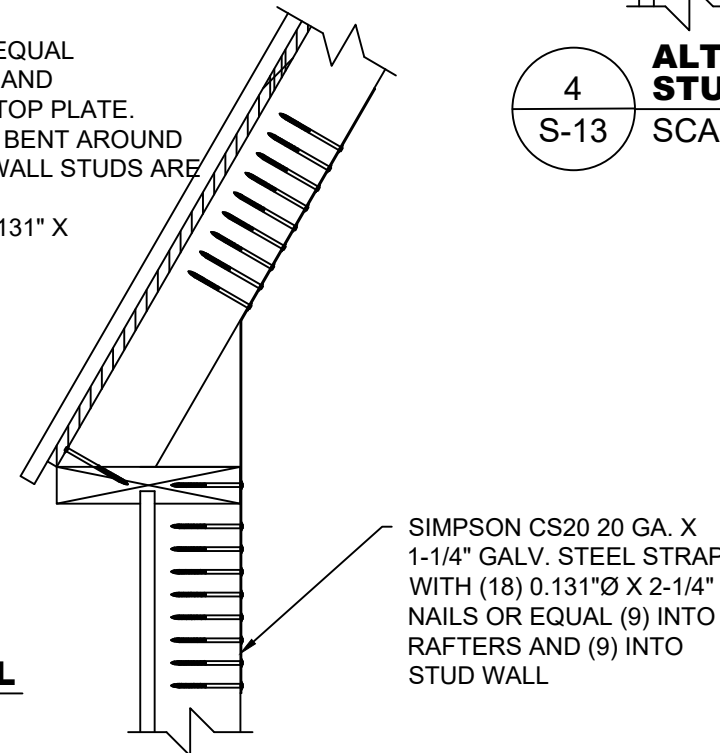


2
S-13 **WALL STUD TO RAFTER FASTENING WITH METAL ROOF DETAIL**
SCALE: 1-1/2" = 1'-0"



3
S-13 **WALL STUD TO RAFTER AND FLOOR FASTENING DETAIL**
SCALE: 1-1/2" = 1'-0"

NOTE:
FOR ALL FASTENING OF FRAMING MEMBERS NOT NOTED ON THIS SHEET, REFER TO FASTENING SCHEDULE ON SHEET S-4.



4
S-13 **ALTERNATE WALL STUD TO RAFTER DETAIL**
SCALE: 1-1/2" = 1'-0"

5
S-13 **ALTERNATE WALL STUD TO RAFTER WITH METAL ROOF DETAIL**
SCALE: 1-1/2" = 1'-0"



04/04/22

1552 6TH ST., WINTER HAVEN, FL 33880
(863)865-6502

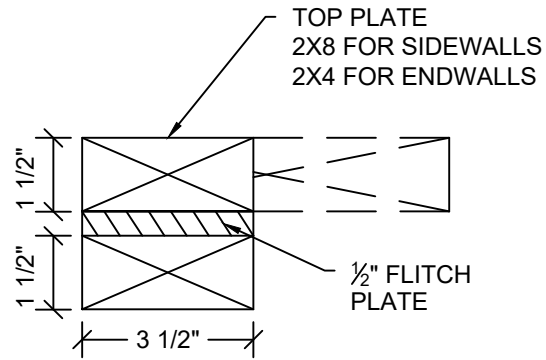
DETAILS	
DATE: 12/08/20	DRAWN BY: RD
SCALE: AS NOTED	CHECKED BY: KMB

SHEET:
S-13
SHEET 14 OF 21

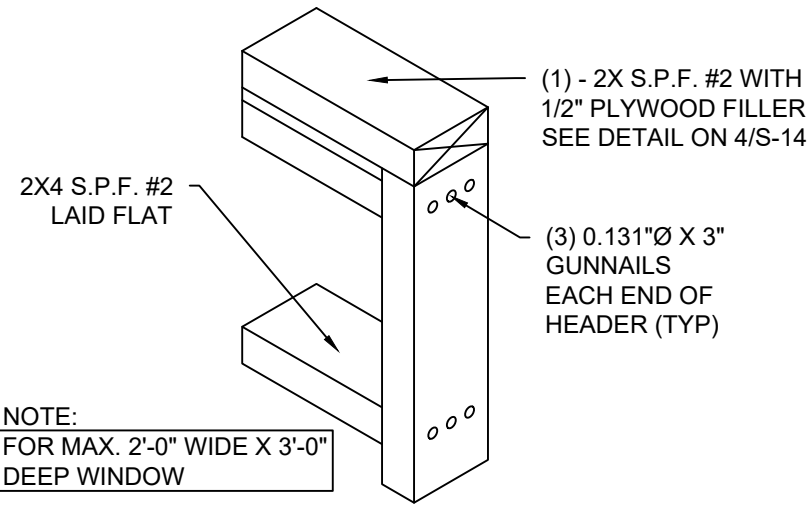
THESE PLANS WERE DESIGNED IN ACCORDANCE WITH THE 2018 INTERNATIONAL BUILDING CODE WITH STATE AMENDMENTS, FBC 2020 (7TH ED.).



18 GA. GALVANIZED STEEL WITH
(12) TOTAL (6) EACH END
0.148"Ø X 1-1/2" NAILS OR EQUAL INTO
RAFTERS AND STUD WALLS



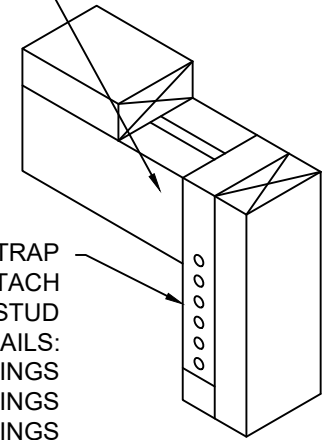
4
S-14 **HEADER SECTION**
SCALE: 3" = 1'-0"



NOTE:
FOR MAX. 2'-0" WIDE X 3'-0"
DEEP WINDOW

6
S-14 **WINDOW HEADER AND SILL DETAIL**
SCALE: N.T.S.

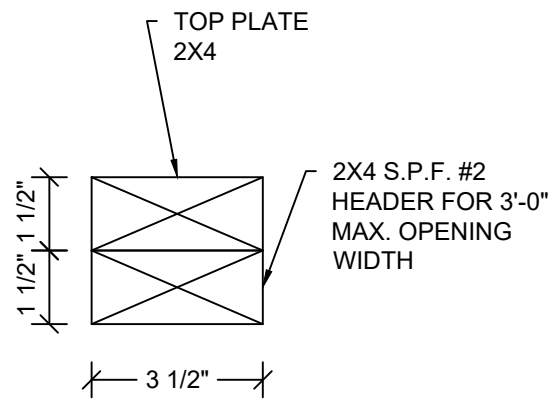
FOR MAX. 4'-0" WIDE X 5'-10" DEEP OPENINGS
IN SIDE WALL - (2) 2X4 S.P.F. #2 WITH 1/2"
PLYWOOD FILLER.
FOR MAX. 6'-0" WIDE X 5'-10" DEEP OPENINGS
IN SIDE WALL - (2) 2X6 S.P.F. #2 WITH 1/2"
PLYWOOD FILLER OR (2) 1-3/4" X 3-1/2" 1.9E
MICROLLAM LVL
FOR OPENINGS IN END WALL:
(2) 2X4 S.P.F. #2 WITH 1/2" PLYWOOD FILLER.



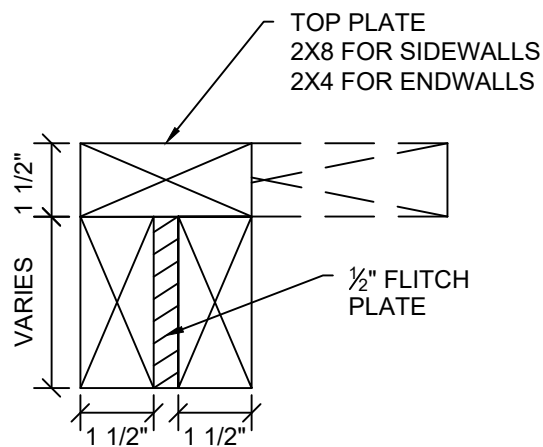
SIMPSON CS20 20GA. X 1-1/2" STRAP
WRAPPED OVER HEADER. ATTACH
STRAP TO EACH SIDE OF JACK STUD
WITH 0.131"Ø X 2 1/4" GUNNAILS:
(3) NAILS FOR UP TO 3'-0" WIDE OPENINGS
(6) NAILS FOR UP TO 6'-0" WIDE OPENINGS
(9) NAILS FOR UP TO 8'-0" WIDE OPENINGS

9
S-14 **HEADER WITH STRAP**
SCALE: N.T.S.

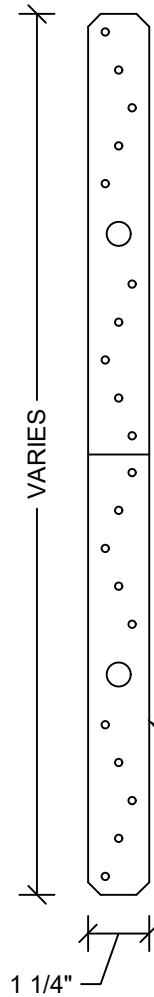
1
S-14 **SIMPSON STRAP DETAIL**
SCALE: 3" = 1'-0"



2
S-14 **HEADER SECTION**
SCALE: 3" = 1'-0"



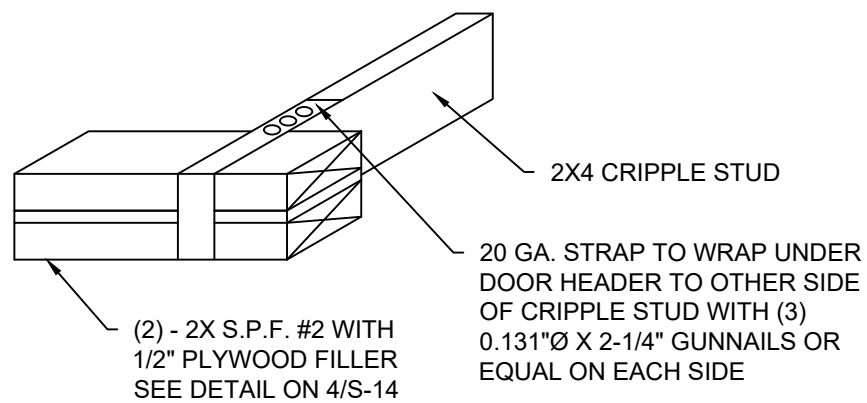
3
S-14 **HEADER SECTION**
SCALE: 3" = 1'-0"



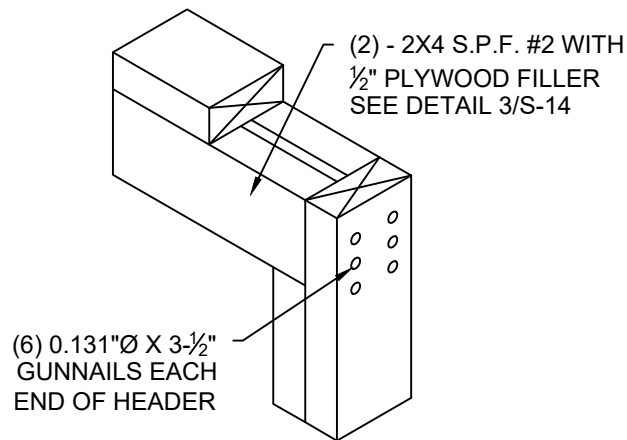
5
S-14 **STRAP DETAIL**
SCALE: 3" = 1'-0"

NOTE:
USED ON EVERY WALL
STUD TO CONNECT WALL
TO ROOF TRUSS.

SIMPSON CS20 20 GA X 1-1/4"
GALV. STEEL STRAP WITH
(18) 0.131"Ø X 2-1/4" NAILS
OR EQUAL (9) INTO
RAFTERS AND (9) INTO
STUD WALL

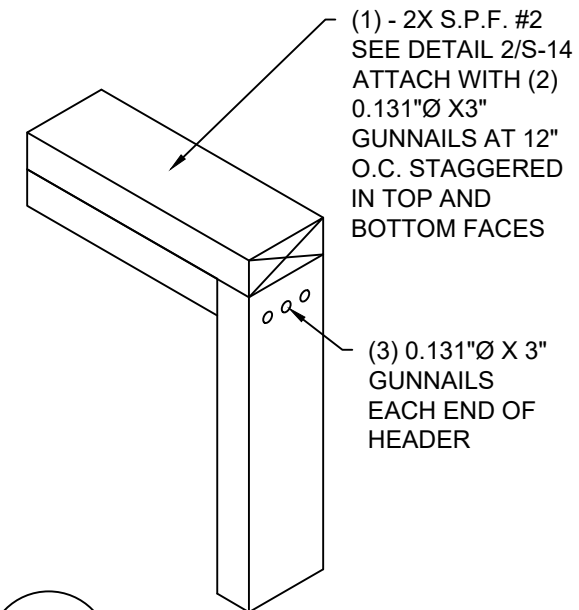


7
S-14 **CRIPPLE STUD WITH STRAP DETAIL**
SCALE: N.T.S.

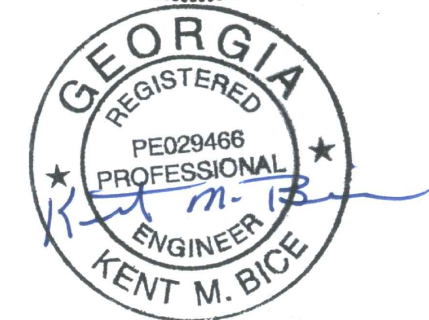


8
S-14 **HEADER WITHOUT STRAP**
SCALE: N.T.S.
NOTE:
FOR MAX. 6'-0" WIDE X 6'-8"
DEEP OPENING ON END WALL

NOTE:
FOR MAX. 6'-0" WIDE X 5'-10"
DEEP OPENING ON SIDE WALL
AND MAX. 8'-0" WIDE X 6'-8"
DEEP OPENING ON END WALL



10
S-14 **HEADER WITHOUT STRAP**
SCALE: N.T.S.
NOTE:
FOR MAX. 7'-0" WIDE X 5'-10"
DEEP OPENING ON END WALL

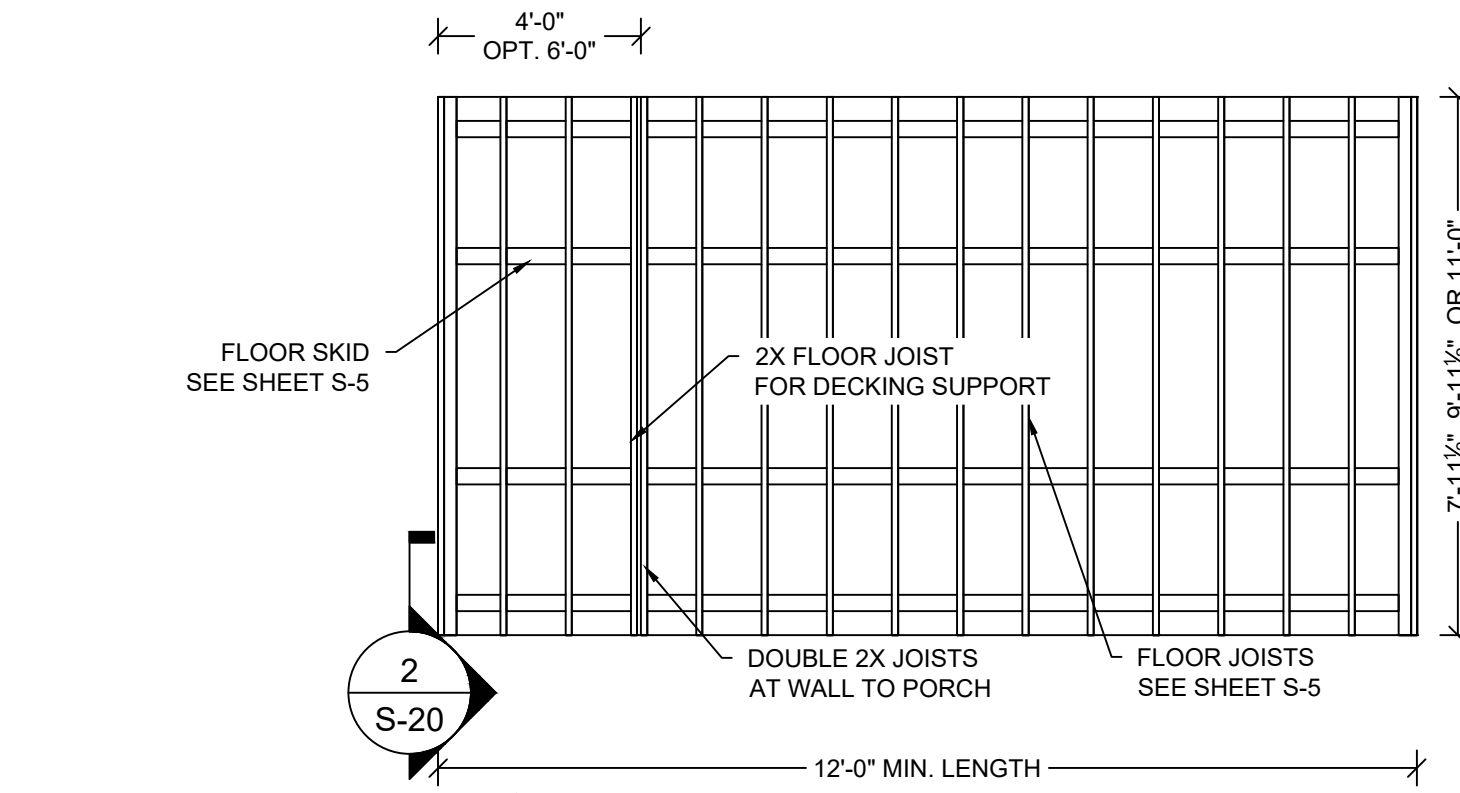


04/04/22

1552 6TH ST., WINTER HAVEN, FL 33880
(863)865-6502

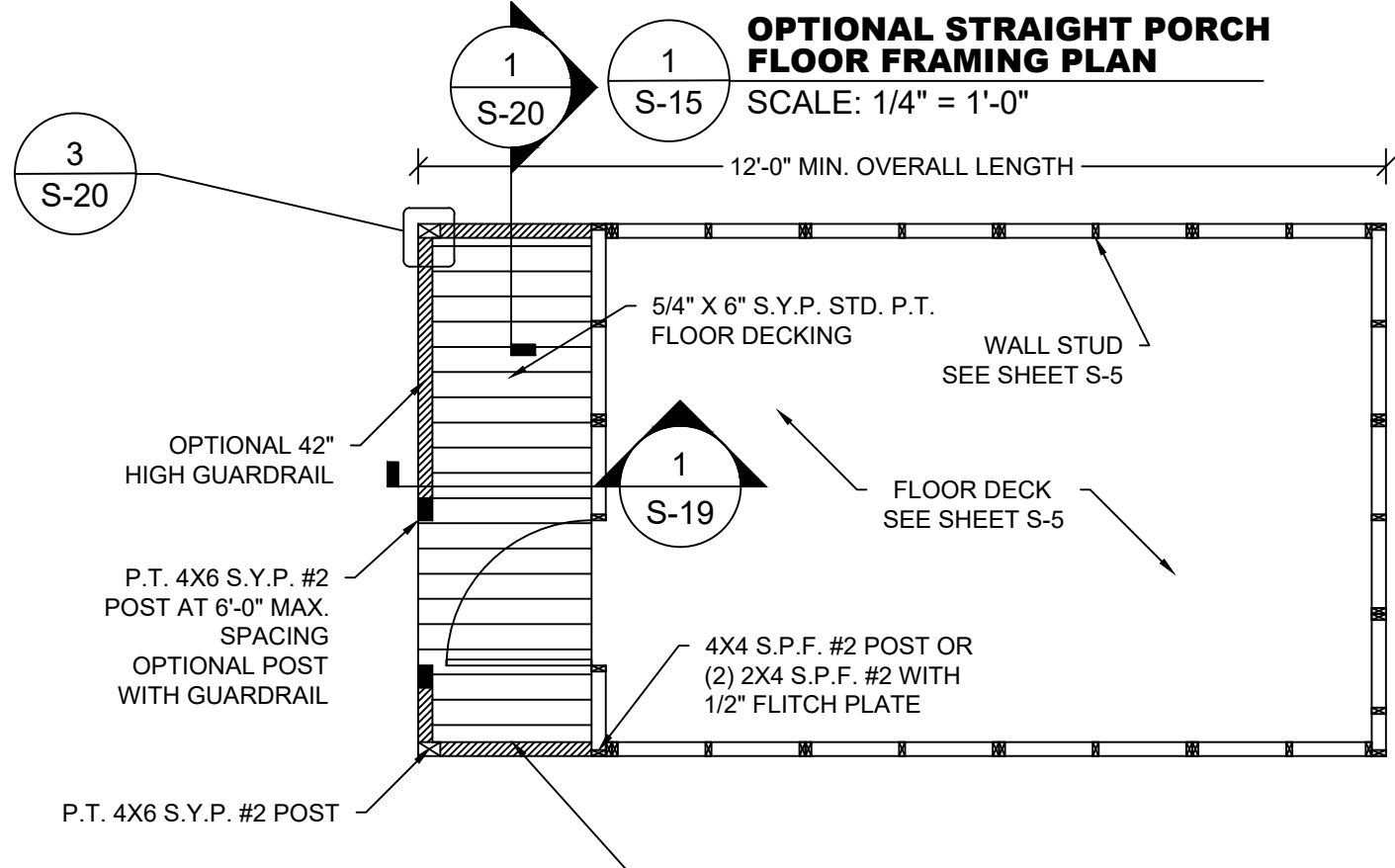
DETAILS	
DATE: 12/08/20	DRAWN BY: RD
SCALE: AS NOTED	CHECKED BY: KMB

SHEET:
S-14
SHEET 15 OF 21



OPTIONAL STRAIGHT PORCH FLOOR FRAMING PLAN

SCALE: 1/4" = 1'-0"



OPTIONAL STRAIGHT PORCH FLOOR PLAN

SCALE: 1/4" = 1'-0"

NOTES:

1. P.T. 4X6 S.Y.P. #2 POST IS SHOWN. 4X4 POST IS OPTIONAL

ON SIDE WALL FOR 4' PORCH - EXTEND TOP PLATE TO TOP OF POST WITH P.T. 2X4 S.Y.P #2 BEAM UNDER IT.
ON SIDE WALL FOR 6' PORCH - (2) 1-3/4" X 3-1/2" 1.9E MICROLLAM LVL BEAM OR P.T. (2) 2X6 S.P.F. #2 WITH 1/2" FLITCH PLATE BETWEEN THE PLIES



04/04/22

1552 6TH ST., WINTER HAVEN, FL 33880
(863)865-6502

FRAMING & FLOOR PLAN FOR STRAIGHT PORCH

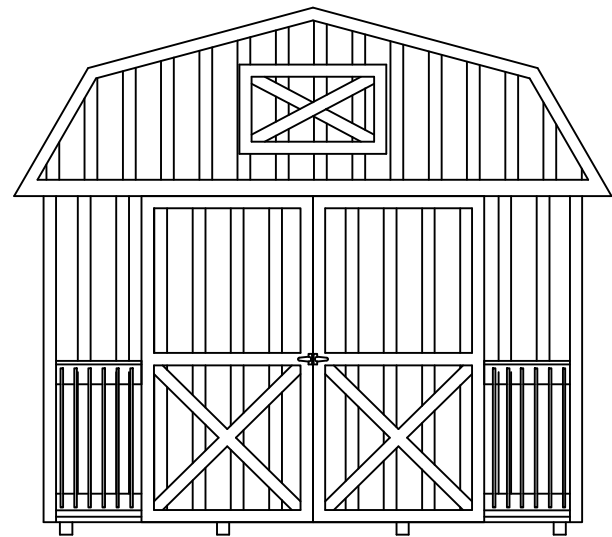
DATE: 12/08/20 DRAWN BY: RD
SCALE: AS NOTED CHECKED BY: KMB

SHEET:

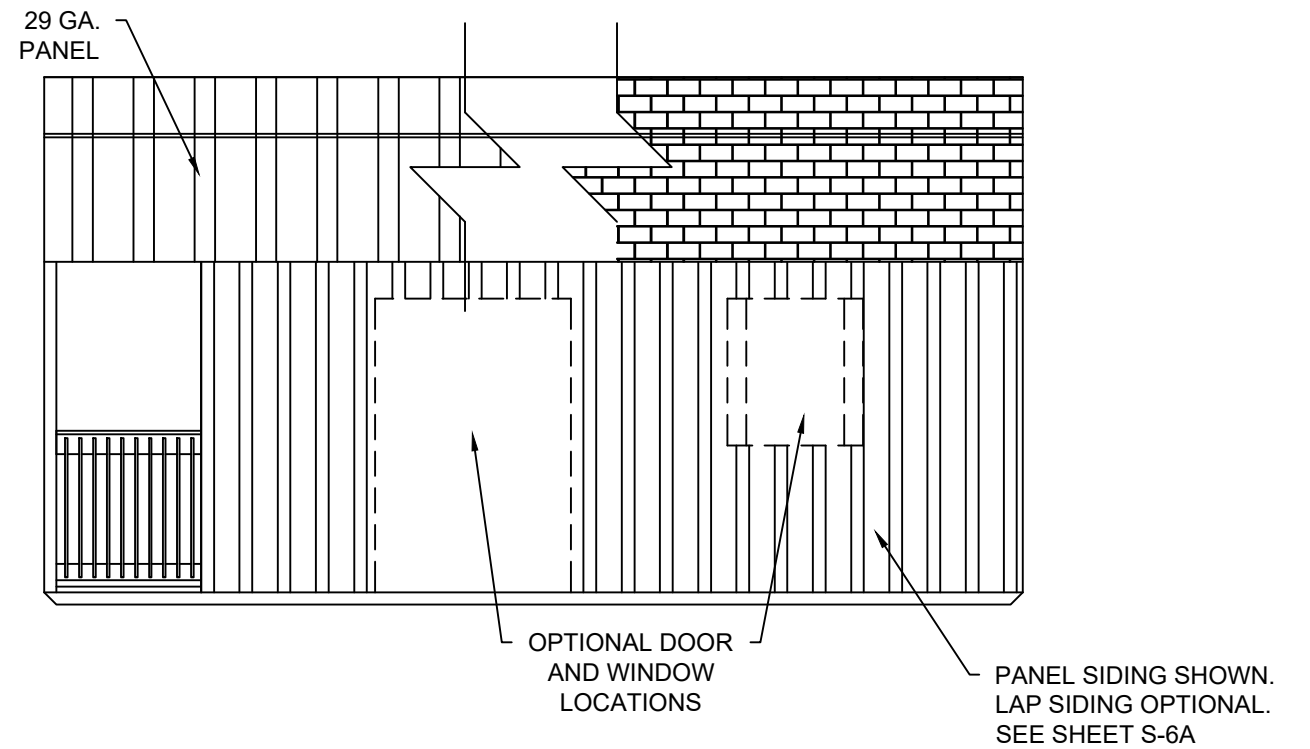
S-15

SHEET 16 OF 21

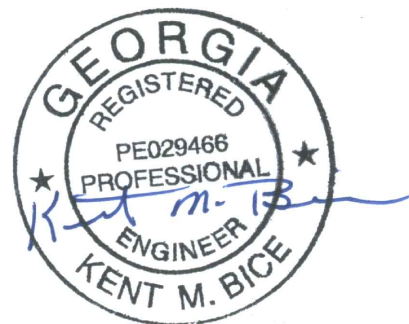
THESE PLANS WERE DESIGNED IN ACCORDANCE WITH THE 2018 INTERNATIONAL BUILDING CODE WITH STATE AMENDMENTS, FBC 2020 (7TH ED.).



1
S-16 **ENDWALL WITH OPTIONAL STRAIGHT PORCH ELEVATION**
SCALE: 1/4" = 1'-0"



2
S-16 **SIDEWALL WITH OPTIONAL STRAIGHT PORCH ELEVATION**
SCALE: 1/4" = 1'-0"



04/04/22



1552 6TH ST., WINTER HAVEN, FL 33880
(863)865-6502

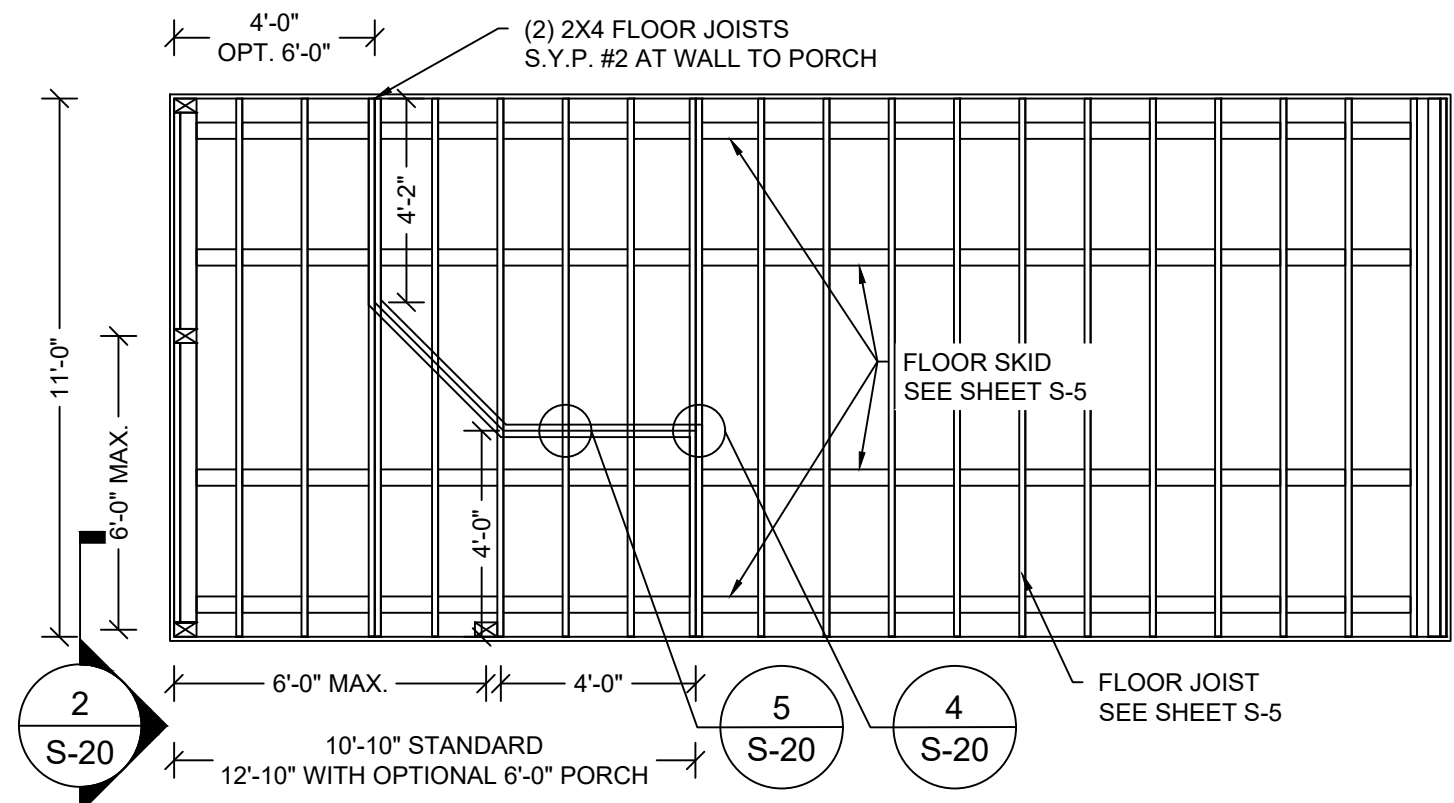
ELEVATIONS FOR STRAIGHT PORCH

DATE: 12/08/20	DRAWN BY: RD
SCALE: AS NOTED	CHECKED BY: KMB

SHEET: **S-16**
SHEET 17 OF 21

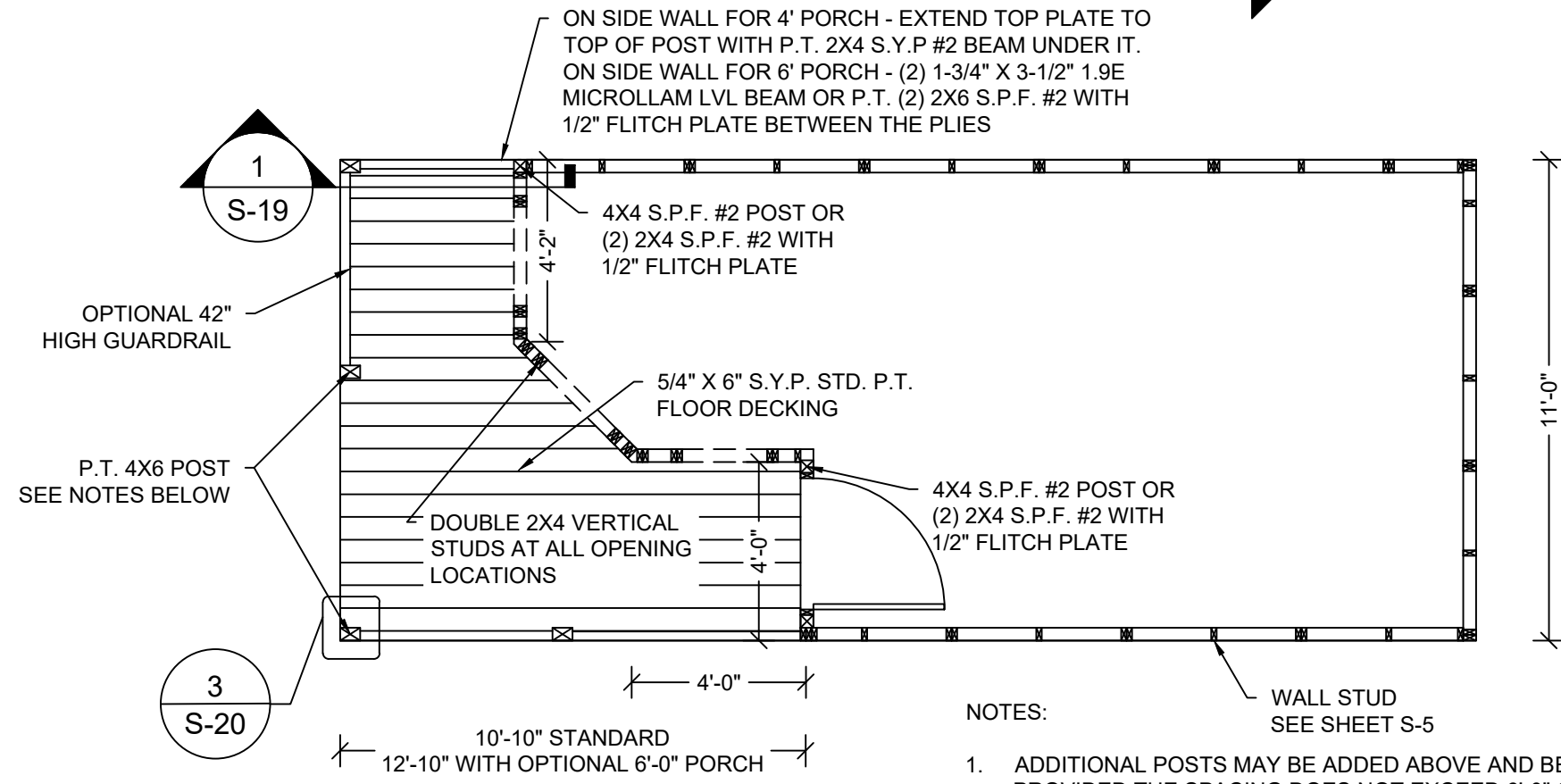
THESE PLANS WERE DESIGNED IN ACCORDANCE WITH THE 2018 INTERNATIONAL BUILDING CODE WITH STATE AMENDMENTS, FBC 2020 (7TH ED.).

24'-0" MIN. LENGTH FOR 4'-0" PORCH; 26'-0" MIN. LENGTH FOR 6'-0" PORCH



OPTIONAL CLIPPED PORCH FLOOR FRAMING PLAN

SCALE: 1/4" = 1'-0"



NOTES:

1. ADDITIONAL POSTS MAY BE ADDED ABOVE AND BEYOND THE AMOUNT SHOWN PROVIDED THE SPACING DOES NOT EXCEED 6'-0" O.C.
2. P.T. 4X6 S.Y.P. #2 POST IS SHOWN 4X4 POST IS OPTIONAL.

OPTIONAL CLIPPED PORCH FLOOR PLAN

SCALE: 1/4" = 1'-0"



04/04/22

1552 6TH ST., WINTER HAVEN, FL 33880
(863)865-6502

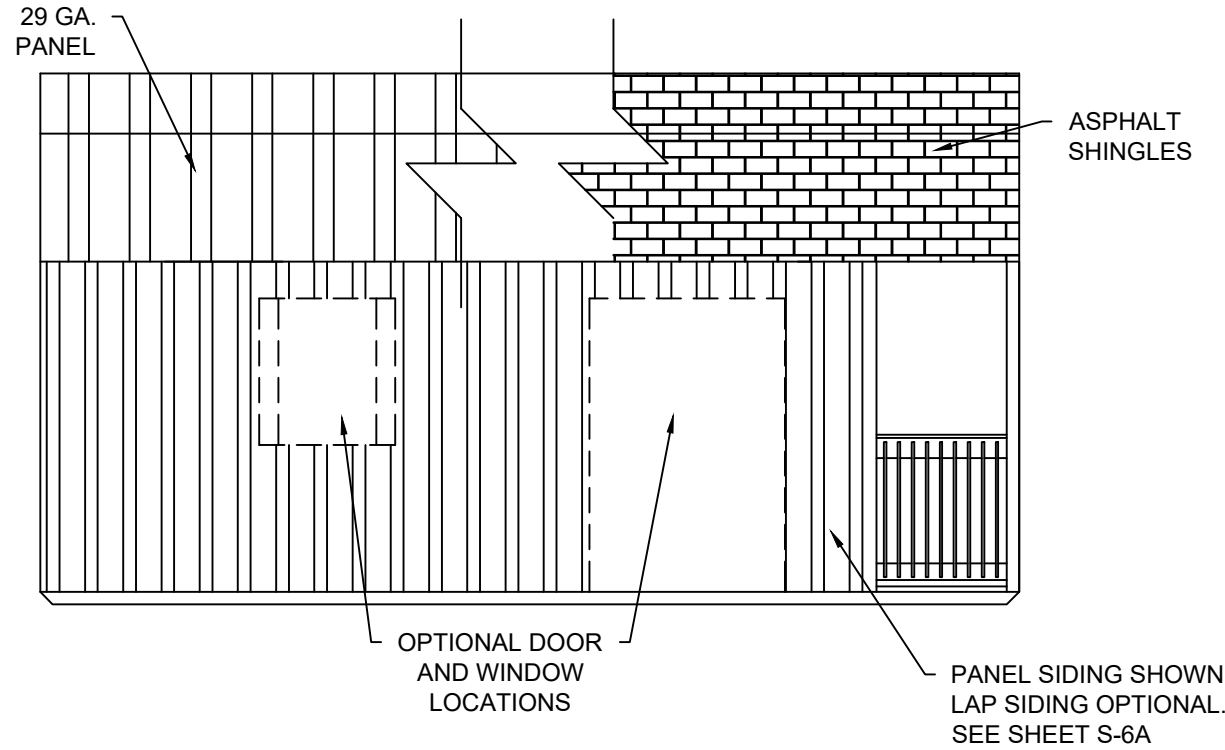
FRAMING & FLOOR PLAN FOR CLIPPED PORCH

DATE: 12/08/20 DRAWN BY: RD
SCALE: AS NOTED CHECKED BY: KMB

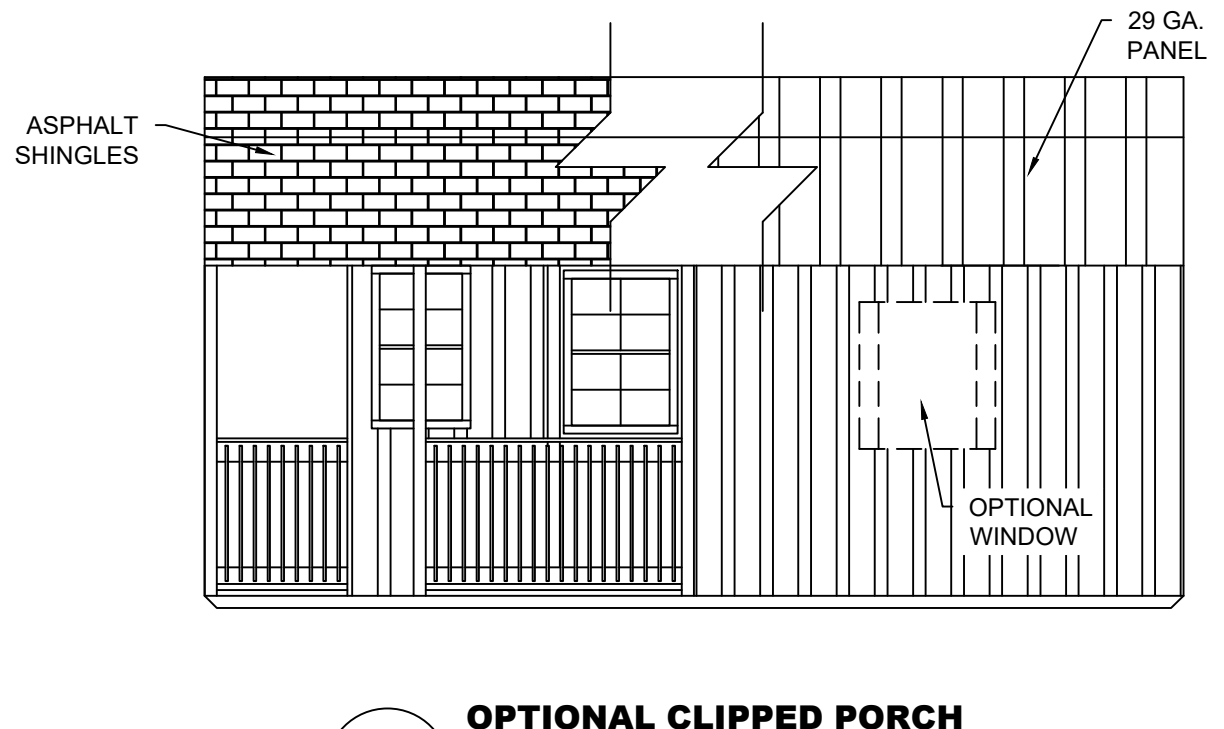
SHEET: **S-17**
SHEET 18 OF 21

THESE PLANS WERE DESIGNED IN ACCORDANCE WITH THE 2018 INTERNATIONAL BUILDING CODE WITH STATE AMENDMENTS, FBC 2020 (7TH ED.).

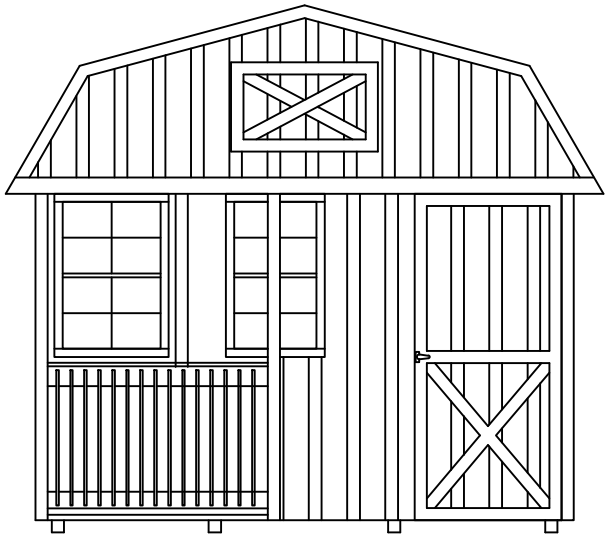
THESE PLANS WERE DESIGNED IN ACCORDANCE WITH THE 2018 INTERNATIONAL BUILDING CODE WITH STATE AMENDMENTS, FBC 2020 (7TH ED.).



1
S-18
**OPTIONAL CLIPPED PORCH
SIDEWALL ELEVATION**
SCALE: 1/4" = 1'-0"



2
S-18
**OPTIONAL CLIPPED PORCH
SIDEWALL ELEVATION**
SCALE: 1/4" = 1'-0"



3
S-18
**OPTIONAL CLIPPED PORCH
ENDWALL ELEVATION**
SCALE: 1/4" = 1'-0"



04/04/22

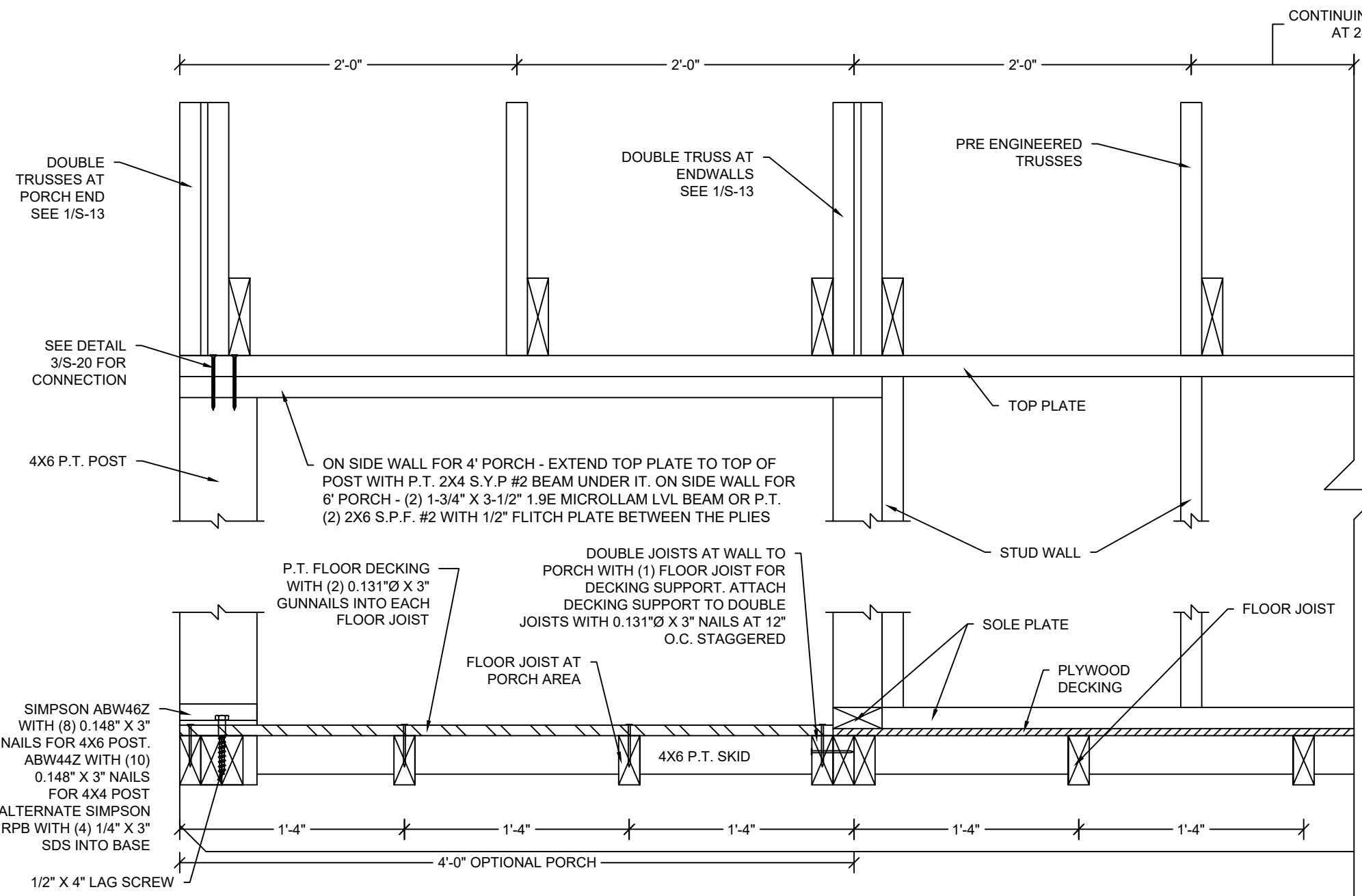
1552 6TH ST., WINTER HAVEN, FL 33880
(863)865-6502

**ELEVATIONS FOR
CLIPPED PORCH**

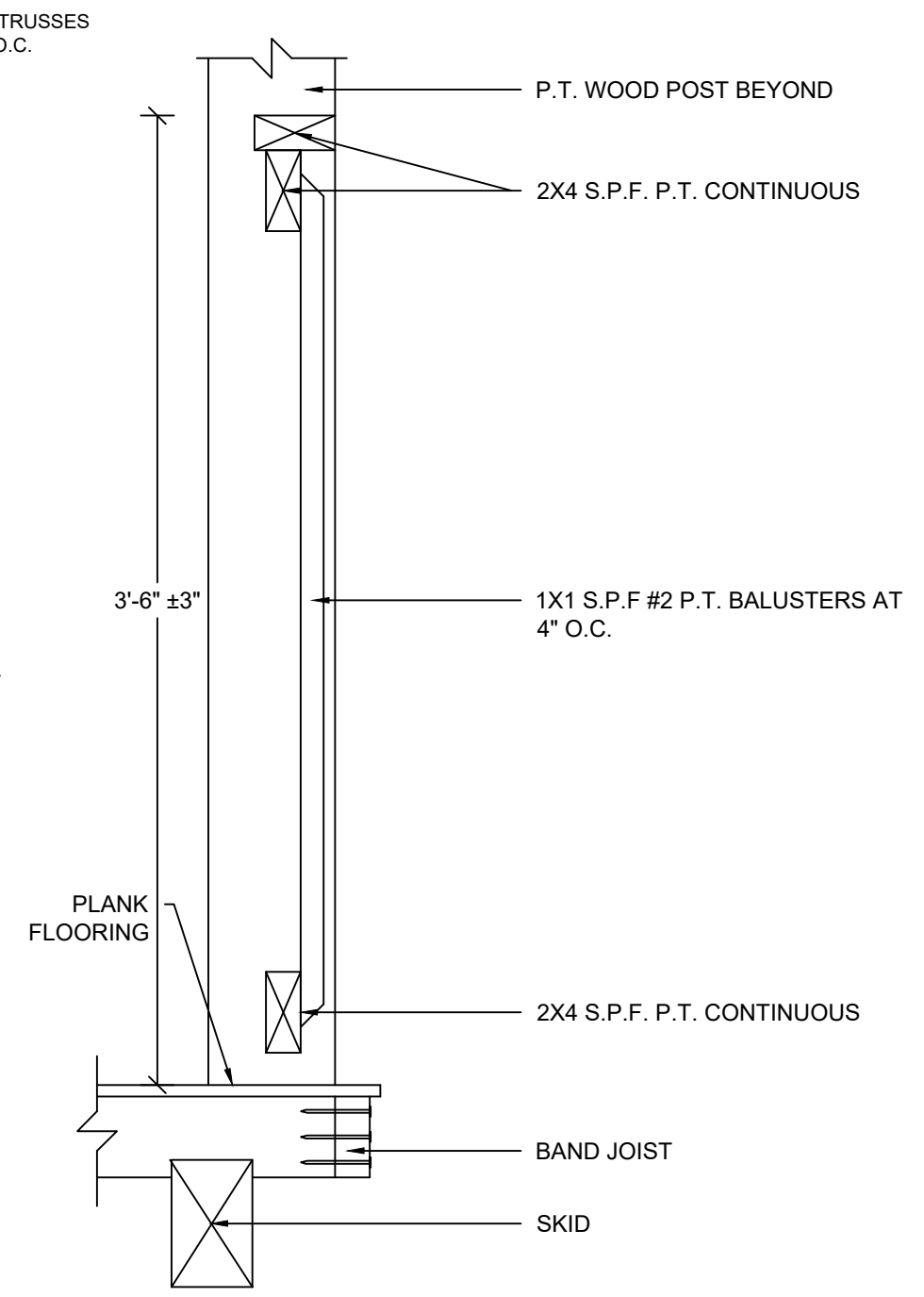
DATE: 12/08/20	DRAWN BY: RD
SCALE: AS NOTED	CHECKED BY: KMB

SHEET:
S-18
SHEET 19 OF 21

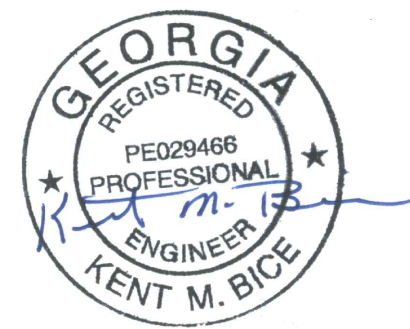
THESE PLANS WERE DESIGNED IN ACCORDANCE WITH THE 2018 INTERNATIONAL BUILDING CODE WITH STATE AMENDMENTS, FBC 2020 (7TH ED.).



1
S-19 **OPTIONAL PORCH SECTION**
SCALE: 1 1/2" = 1'-0"



2
S-19 **RAILING DETAIL**
SCALE: NTS

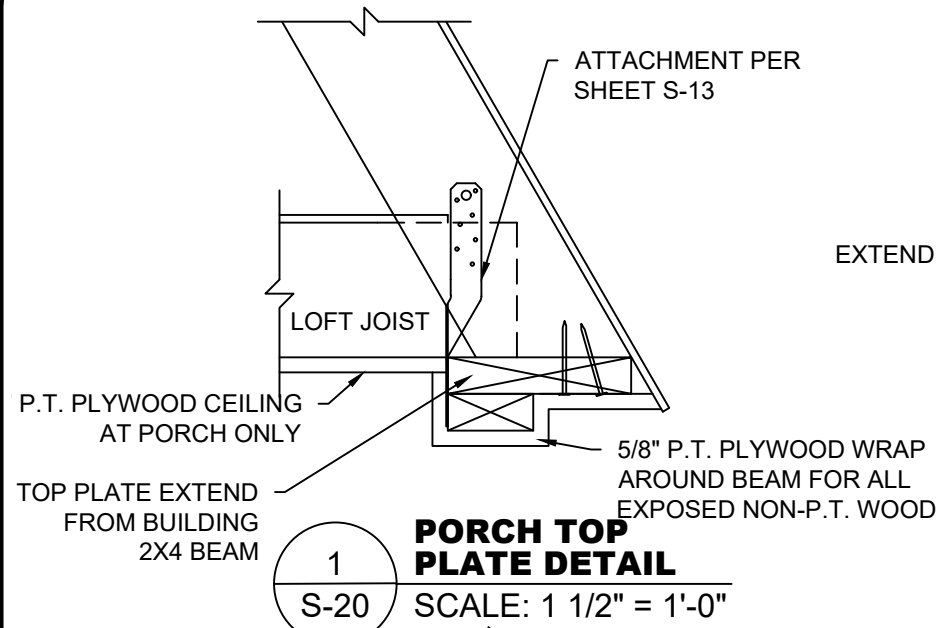


04/04/22

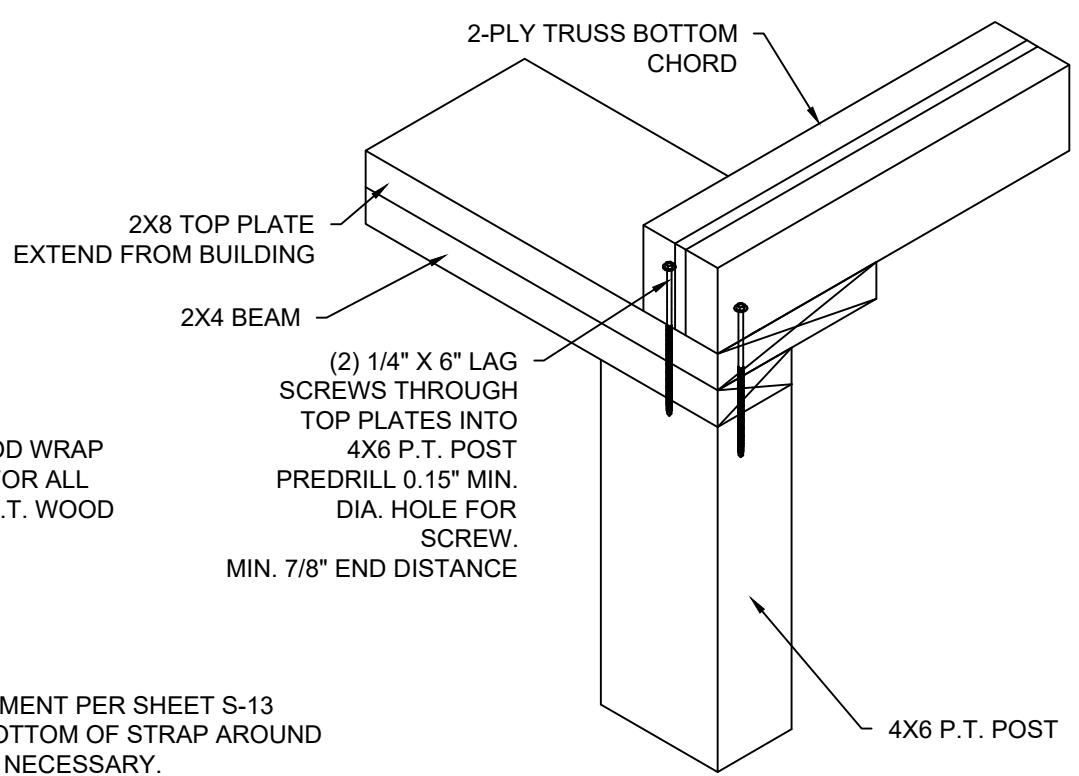
1552 6TH ST., WINTER HAVEN, FL 33880
(863)865-6502

DETAILS	
DATE: 12/08/20	DRAWN BY: RD
SCALE: AS NOTED	CHECKED BY: KMB

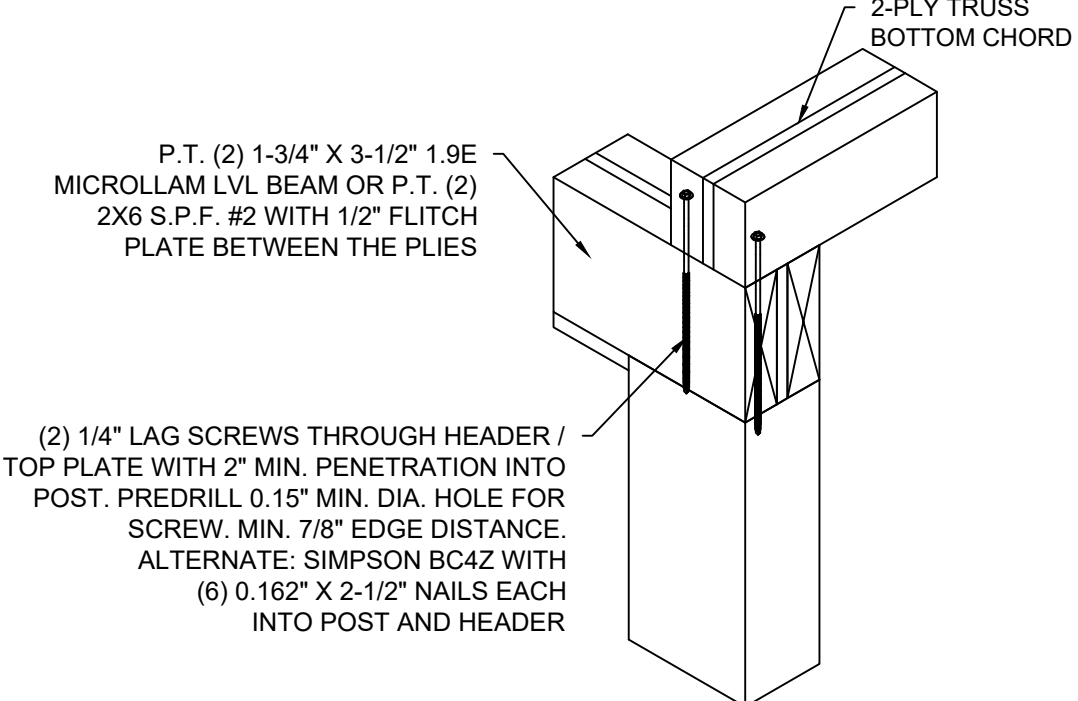
SHEET:
S-19
SHEET 20 OF 21



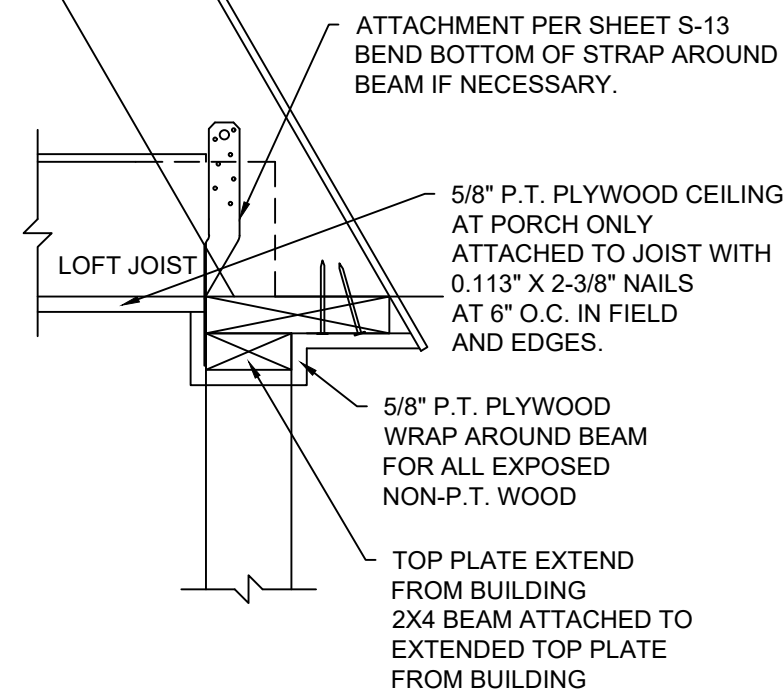
1
S-20
PORCH TOP PLATE DETAIL
SCALE: 1 1/2" = 1'-0"



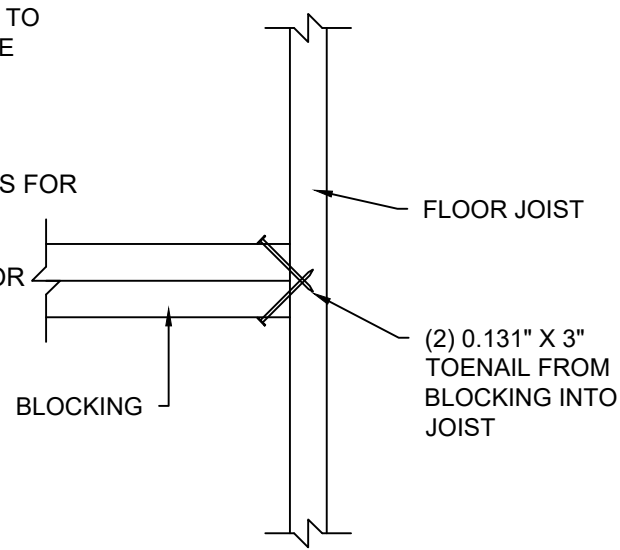
3
S-20
HEADER IN SIDE WALL TO POST CONNECTION - 4'-0\"/>



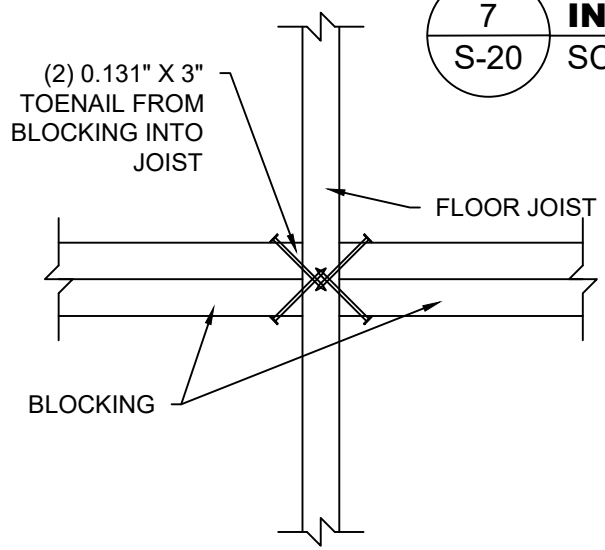
6
S-20
HEADER IN SIDE WALL TO POST CONNECTION - 6'-0\"/>



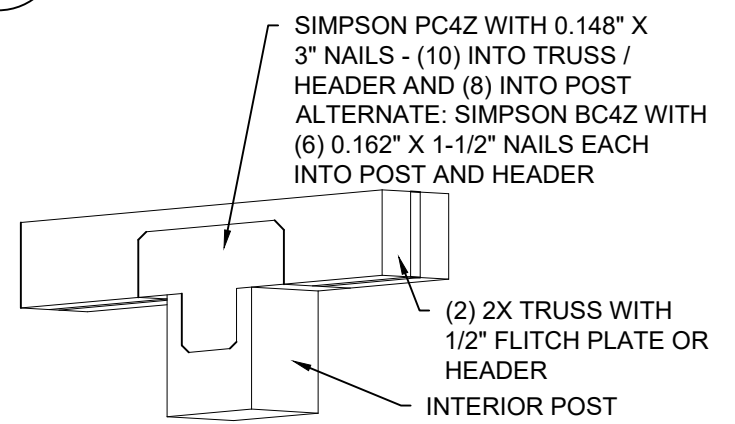
2
S-20
SECTION
SCALE: 1 1/2" = 1'-0"



4
S-20
BLOCKING ATTACHMENT DETAIL
SCALE: 1 1/2" = 1'-0"



5
S-20
BLOCKING ATTACHMENT DETAIL
SCALE: 1 1/2" = 1'-0"



7
S-20
TRUSS / HEADER TO INTERIOR POST CONNECTION
SCALE: 1 1/2" = 1'-0"



04/04/22

1552 6TH ST., WINTER HAVEN, FL 33880
(863)865-6502

DETAILS	
DATE: 12/08/20	DRAWN BY: RD
SCALE: AS NOTED	CHECKED BY: KMB

SHEET:
S-20
SHEET 21 OF 21

THESE PLANS WERE DESIGNED IN ACCORDANCE WITH THE 2018 INTERNATIONAL BUILDING CODE WITH STATE AMENDMENTS, FBC 2020 (7TH ED.).